

26 June 2023

To Business partner

Product Change Notification (PCN)

We thank you very much for your continued business with our TFT-LCD products.
This letter is to notify a LCD product discontinuance and request of transition to successor product.

1. Part number: Please see 'Table 1'

Table 1. EOL Model and Replacement Model

EOL model	successor model
COM104H9M11SSS	COM104H9M25SSS

2. Background:

Polarizer on the panel was discontinued and since Toppan is unable to produce LCD modules any longer, we are notifying you of EOL(End Of Life) this time.

Toppan has decided to change to the alternative polarizer and will launch the successor model. In addition, the color filter and LED (backlight component) will also be changed to maintain the performance of the successor compatible with the current model.

3. Successor model Timeline:

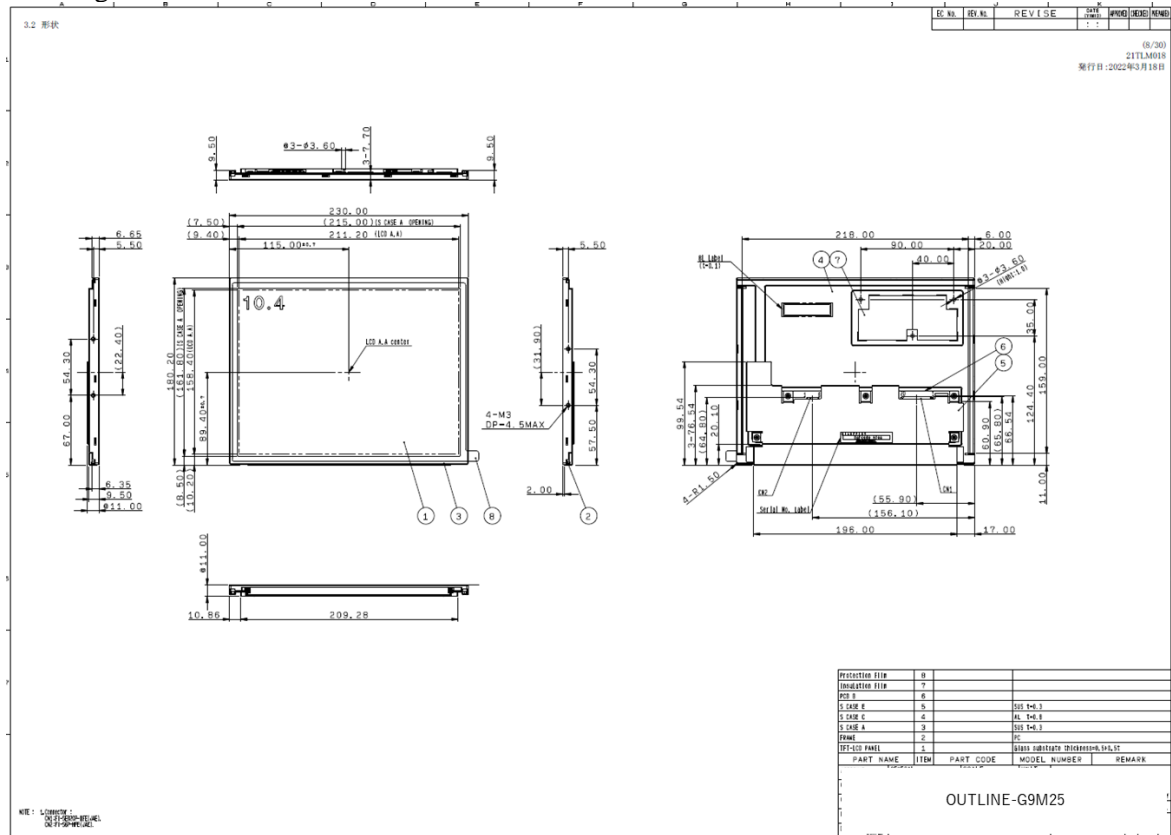
- Datasheet: June 2023
- Sample: November 2023
- SOP: November 2024

4. Specs of Successor model:

There are no changes to the electrical, mechanical(dimensions) of the product.
Due to the change in polarizer, there will be some changes in display characteristics.
(Color on the screen and reflection characteristics)
Refer to specs details on the next page.

Items	Units	Current model COM104H9M11SSS	Successor model COM104H9M25SSS
Display type , Surface Finishing	--	IPS-FFS,Blanview,Normally Black,Clear	IPS-FFS,Blanview,Normally Black,Clear
Display Size	mm / inch	264.0 / 10.4	264.0 / 10.4
Active area	mm	211.2 (H) × 158.4 (V)	211.2 (H) × 158.4 (V)
Display Format	stripes	SVGA : 800 × RGB (H) × 600 (V)	SVGA : 800 × RGB (H) × 600 (V)
Dot Pitch	mm	0.088 × RGB (H) × 0.264 (V)	0.088 × RGB (H) × 0.264 (V)
Outline Dimensions	mm	230.0 (H) × 180.2 (V) × 11.0 (D)	230.0 (H) × 180.2 (V) × 11.0 (D)
Weight	g	400	400
Input Signal Type	--	VESA/JEIDA LVDS Interface	VESA/JEIDA LVDS Interface
Number of Colors	colors	262k/6-bit , 16.7M/8-bit	262k/6-bit , 16.7M/8-bit
Contrast Ratio	--	1,000	(1,300)
NTSC Ratio	%	47	(50)
Brightness	cd/m ²	650	650 or more
Viewing Angle (U/D/L/R)	deg.	85 / 85 / 85 / 85	88 / 88 / 88 / 88
Operating Temperature	°C	-30 ~ +70	(-30 ~ +80)
Storage Temperature	°C	-30 ~ +80	-30 ~ +80
Power Supply (LCD)	V	3.3	3.3
Power Consumption (LCD)	mW	818	818
Power Consumption (LED)	mW	2,892	2,892
Estimated Life of LED	hrs.	70,000	70,000

Drawing COM104H9M25SSS:



If you have any questions, please feel free to contact TOPPAN.

Sincerely

Asazuma

Akiko Asazuma
 Sales Department
 TOPPAN INC.