



OUR GLOBAL  
COMPETENCE  
CENTRES

 APOLLO DISPLAY  
TECHNOLOGIES



 DISTEC



 DISPLAY  
TECHNOLOGY



# Manual

## iBASE

**IB917**

**3,5" SBC with 7th Generation Intel® Core™ U-Series processor**



---

The information contained in this document has been carefully researched and is, to the best of our knowledge, accurate. However, we assume no liability for any product failures or damages, immediate or consequential, resulting from the use of the information provided herein. Our products are not intended for use in systems in which failures of product could result in personal injury. All trademarks mentioned herein are property of their respective owners. All specifications are subject to change without notice.

---

# **IB917 Series**

**Intel® 7<sup>th</sup> Gen. Core™  
U-series / Celeron® SoC  
3.5" Disk-Size SBC**

## **User's Manual**

Version 1.3  
(Jan. 2018)

## **Copyright**

© 2018 IBASE Technology, Inc. All rights reserved.

No part of this publication may be reproduced, copied, stored in a retrieval system, translated into any language or transmitted in any form or by any means, electronic, mechanical, photocopying, or otherwise, without the prior written consent of IBASE Technology, Inc. (hereinafter referred to as "IBASE").

## **Disclaimer**

IBASE reserves the right to make changes and improvements to the products described in this document without prior notice. Every effort has been made to ensure the information in the document is correct; however, IBASE does not guarantee this document is error-free.

IBASE assumes no liability for incidental or consequential damages arising from misapplication or inability to use the product or the information contained herein, nor for any infringements of rights of third parties, which may result from its use.

## **Trademarks**

All the trademarks, registrations and brands mentioned herein are used for identification purposes only and may be trademarks and/or registered trademarks of their respective owners.

## Compliance



This product has passed CE Class B tests for environmental specifications and limits. This product is in accordance with the directives of the European Union (EU). In a domestic environment, this product may cause radio interference in which case users may be required to take adequate measures.



This product has been tested and found to comply with the limits for a Class B device, pursuant to Part 15 of the FCC Rules. These limits are designed to provide reasonable protection against harmful interference in a residential installation. This equipment generates, uses and can radiate radio frequency energy and, if not installed and used in accordance with manufacturer's instructions, may cause harmful interference to radio communications.

## WEEE



This product must not be disposed of as normal household waste, in accordance with the EU directive of for waste electrical and electronic equipment (WEEE - 2012/19/EU). Instead, it should be disposed of by returning it to a municipal recycling collection point. Check local regulations for disposal of electronic products.

## Green IBASE



This product is compliant with the current RoHS restrictions and prohibits use of the following substances in concentrations exceeding 0.1% by weight (1000 ppm) except for cadmium, limited to 0.01% by weight (100 ppm).

- Lead (Pb)
- Mercury (Hg)
- Cadmium (Cd)
- Hexavalent chromium (Cr6+)
- Polybrominated biphenyls (PBB)
- Polybrominated diphenyl ether (PBDE)

## Important Safety Information

Carefully read the precautions before using the board.

### Environmental conditions:

- Use this product in environments with ambient temperatures between 0°C and 60°C.
- Do not leave this product in an environment where the storage temperature may be below -20° C or above 80° C. To prevent from damages, the product must be used in a controlled environment.

### Care for your iBASE products:

- Before cleaning the PCB, unplug all cables and remove the battery.
- Clean the PCB with a circuit board cleaner or degreaser, or use cotton swabs and alcohol.
- Vacuum the dust with a computer vacuum cleaner to prevent the fan from being clogged.



### WARNING

### Attention during use:

- Do not use this product near water.
- Do not spill water or any other liquids on this product.
- Do not place heavy objects on the top of this product.

### Anti-static precautions

- Wear an anti-static wrist strap to avoid electrostatic discharge.
- Place the PCB on an anti-static kit or mat.
- Hold the edges of PCB when handling.
- Touch the edges of non-metallic components of the product instead of the surface of the PCB.
- Ground yourself by touching a grounded conductor or a grounded bit of metal frequently to discharge any static.



### CAUTION

There is danger of explosion if the internal lithium-ion battery is replaced by an incorrect type. Replace only with the same or equivalent type recommended by the manufacturer. Dispose of used batteries according to the manufacturer's instructions or recycle them at a local recycling facility or battery collection point.

## Warranty Policy

- **IBASE standard products:**

24-month (2-year) warranty from the date of shipment. If the date of shipment cannot be ascertained, the product serial numbers can be used to determine the approximate shipping date.

- **3<sup>rd</sup>-party parts:**

12-month (1-year) warranty from delivery for the 3<sup>rd</sup>-party parts that are not manufactured by IBASE, such as CPU, CPU cooler, memory, storage devices, power adapter, panel and touchscreen.

- \* PRODUCTS, HOWEVER, THAT FAIL DUE TO MISUSE, ACCIDENT, IMPROPER INSTALLATION OR UNAUTHORIZED REPAIR SHALL BE TREATED AS OUT OF WARRANTY AND CUSTOMERS SHALL BE BILLED FOR REPAIR AND SHIPPING CHARGES.

## Technical Support & Services

1. Visit the IBASE website at [www.ibase.com.tw](http://www.ibase.com.tw) to find the latest information about the product.
2. If you need any further assistance from your distributor or sales representative, prepare the following information of your product and elaborate upon the problem.
  - Product model name
  - Product serial number
  - Detailed description of the problem
  - The error messages in text or in screenshots if there is any
  - The arrangement of the peripherals
  - Software in use (such as OS and application software, including the version numbers)
3. If repair service is required, you can download the RMA form at <http://www.ibase.com.tw/english/Supports/RMAService/>. Fill out the form and contact your distributor or sales representative.

# Table of Contents

---

<b>Compliance</b> .....	<b>iii</b>
<b>Important Safety Information</b> .....	<b>iv</b>
<b>Warranty Policy</b> .....	<b>v</b>
<b>Technical Support &amp; Services</b> .....	<b>v</b>
<b>Chapter 1      General Information</b> .....	<b>1</b>
1.1    Introduction .....	2
1.2    Features .....	2
1.3    Packing List.....	3
1.4    Optional Accessories.....	3
1.5    Specifications .....	4
1.6    Block Diagram.....	6
1.7    Overview .....	7
1.8    Dimensions .....	9
<b>Chapter 2      Hardware Configuration</b> .....	<b>11</b>
2.1    Essential Installations Before You Begin .....	12
2.1.1    Installing the Memory .....	12
2.2    Setting the Jumpers .....	13
2.2.1    How to Set Jumpers.....	13
2.3    Jumper & Connector Locations .....	14
2.4    Jumpers Quick Reference .....	15
2.4.1    CMOS Data Clearance (JP2) .....	15
2.4.2    ME Register Clearance (JP3).....	16
2.4.3    LVDS Panel Power / Brightness Selections (JP4 / JP5) .....	16
2.5    Connectors Quick Reference.....	17
2.5.1    COM1 RS-232/422/485 Port (CN9) .....	18
2.5.2    Audio Connector (J1) .....	19
2.5.3    SATA HDD Power Connector (J5).....	19
2.5.4    Front Panel Connector (J6) .....	20
2.5.5    USB 2.0 Connector (J7) .....	21
2.5.6    Battery Connector (J10) .....	21
2.5.7    COM2, COM3, COM4 RS-232 Ports (J15, J12, J11).....	22
2.5.8    DC Power Input Connector (J13).....	22
2.5.9    Digital I/O Connector (J16).....	23



2.5.10	LCD Backlight Connector (J19) .....	23
2.5.11	LVDS Connector (J17, J18) .....	24
2.5.12	CPU Fan Connector (CPU_FAN1).....	24
<b>Chapter 3</b>	<b>Drivers Installation .....</b>	<b>25</b>
3.1	Introduction.....	26
3.2	Intel® Chipset Software Installation Utility .....	26
3.3	VGA Driver Installation.....	28
3.4	HD Audio Driver Installation .....	30
3.5	LAN Driver Installation .....	32
3.6	Intel® Management Engine Drivers Installation .....	34
<b>Chapter 4</b>	<b>BIOS Setup.....</b>	<b>37</b>
4.1	Introduction.....	38
4.2	BIOS Setup.....	38
4.3	Main Settings.....	39
4.4	Advanced Settings.....	40
4.4.1	CPU Configuration.....	40
4.4.2	Power & Performance.....	41
4.4.3	PCH-FW Configuration.....	42
4.4.4	Trusted Computing.....	49
4.4.5	ACPI Settings.....	51
4.4.6	LVDS (eDP/DP) Configuration.....	52
4.4.7	iSMART Controller.....	53
4.4.8	F81846 Super IO Configuration .....	54
4.4.9	Hardware Monitor .....	56
4.4.10	CSM Configuration .....	57
4.4.11	USB Configuration.....	58
4.5	Chipset Settings .....	60
4.5.1	PCH-IO Configuration.....	60
4.6	Security Settings.....	62
4.7	Boot Settings .....	63
4.8	Save & Exit Settings .....	64
<b>Appendix</b>	<b>.....</b>	<b>65</b>
A.	I/O Port Address Map .....	66
B.	Interrupt Request Lines (IRQ).....	69
C.	Watchdog Timer Configuration .....	71
D.	Onboard Connector Reference Types.....	75

This page is intentionally left blank.

# Chapter 1

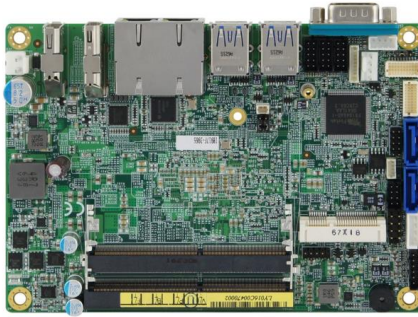
## General Information

The information provided in this chapter includes:

- Features
- Packing List
- Optional Accessories
- Specifications
- Block Diagram
- Board Overview
- Board Dimensions

## 1.1 Introduction

IB917 series is a 3.5" disk-size single board computer based on the platform of Intel® 7<sup>th</sup> Gen. Core™ U-series or Celeron® processor. It features both HDMI and Display Port at I/O coastline, and on-board headers for dual channel LVDS interface for video display. It is able to be operated at the ambient operating temperature ranging from 0 ~ 60 °C, and even from -20 ~ 80 °C for models of wide temperature.



**Photo of IB917AF**

## 1.2 Features

- 3.5" disk-size SBC with Intel® 7<sup>th</sup> Gen. Core™ U-series or Celeron® processor
- 2 x DDR4-2133 SO-DIMM slots, expandable up to 32 GB
- Video output through LVDS connector, Display Port, and HDMI 1.4
- 2 x GbE LAN ports, 2 x USB 2.0, 4 x USB 3.0, 4 x COM, 2 x SATAIII, 1 x Mini-PCIe slot (full-size)
- Configurable watchdog timer, digital I/O, mSATA, iSMART, TPM 2.0

## 1.3 Packing List

Your IB917 package should include the items listed below. If any of the items below is missing, contact the distributor or dealer from whom you purchased the product.

- IB917 SBC x 1
- Disk (including chipset drivers and flash memory utility) x 1
- This User's Manual x 1

## 1.4 Optional Accessories

IBASE provides optional accessories as follows. Please contact us or your dealer if you need any.

- Cable Kit (IB76A-1)
  - Including:
    - DC-In Power Cable (PW87) x 1
    - COM Ports Cable (PK1H) x 1
    - SATA & HDD Power Cable (SATA-53A) x 1
    - USB 2.0 Cable (USB29) x 1
- Audio cable (Audio-18)
- Heatsink (HSIB916-A)
- Heat Spreader (HSIB916-1)

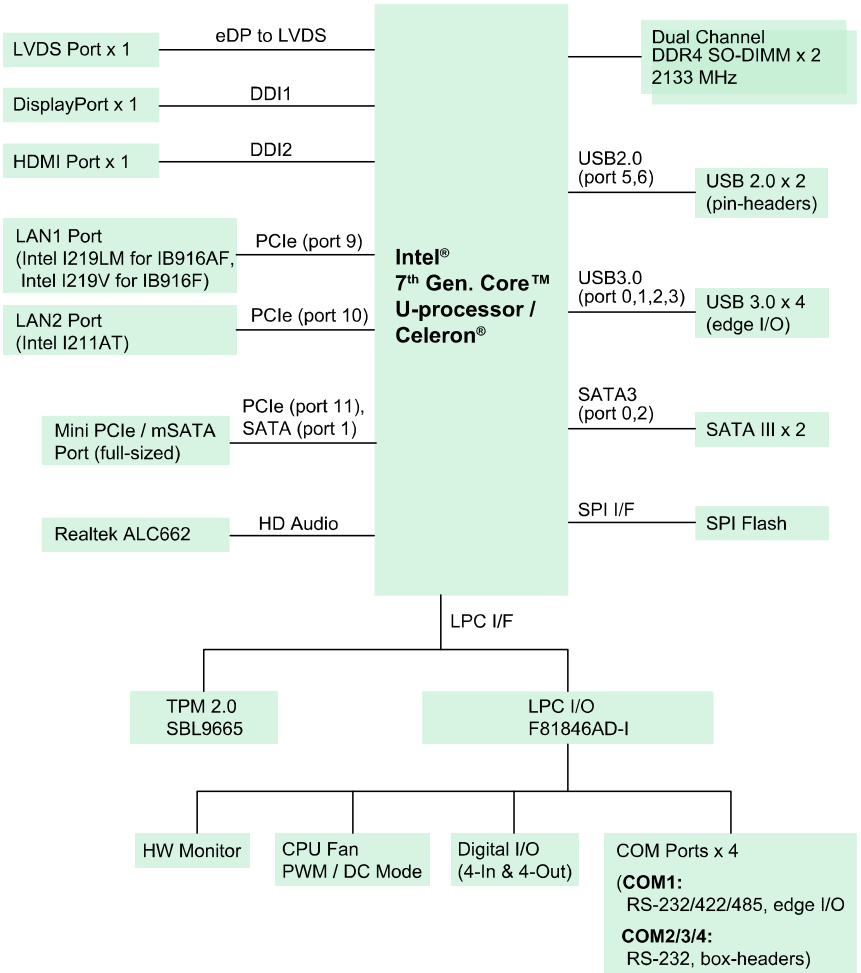
## 1.5 Specifications

Product Name	IB917AF-7600	IB917AF-7300	IB917F-7100	IB917F-3965
Form Factor	3.5" disk-size SBC			
<b>System</b>				
Operating System	<ul style="list-style-type: none"> <li>Windows 10</li> <li>Linux Ubuntu / Fedora</li> </ul>			
CPU Type	Intel® 7 <sup>th</sup> Gen. Core™ i7-7600U	Intel® 7 <sup>th</sup> Gen. Core™ i5-7300U	Intel® 7 <sup>th</sup> Gen. Core™ i3-7100U	Intel® Celeron® 3965U
CPU Speed	2.8 GHz / 3.9 GHz	2.6 GHz / 3.5 GHz	2.4 GHz	2.2 GHz
Cache	4 MB			
Chipset	Integrated in Intel® U-series processor			
Memory	2 x DDR4-2133 SO-DIMM, expandable up to 32 GB (Non-ECC)			
Storage	1 x mSATA SSD			
Graphics	Intel® 7 <sup>th</sup> Gen. Core™ U-series integrated graphics			
Network	Intel® I219LM & I211AT		Intel® I219V & I211AT	
Super I/O	Fintek F81846AD-I			
Audio Codec & Controller	Intel® U-series processor built-in HD audio controller Realtek ALC662 codec			
Power Requirement	9 ~ 24V DC-In			
iAMT	11.6		N/A	
iSMART	3.2			
TPM	2.0			
RAID	Yes			
Watchdog Timer	Yes (256 segments, 0, 1, 2...255 sec / min)			

<b>BIOS</b>	AMI BIOS
<b>H/W Monitor</b>	Yes
<b>Dimensions</b>	102.22 x 147.01 mm (4.02" x 5.8")
<b>RoHS</b>	Yes
<b>Certification</b>	CE, FCC Class B
<b>I/O Ports</b>	
<b>Display</b>	<ul style="list-style-type: none"> <li>• 1 x HDMI (1.4), 3840 x 2160 at 30 Hz</li> <li>• 1 x DisplayPort (1.2), 3840 x 2160 at 60 Hz</li> <li>• 1 x dual-channel LVDS, 1920 x 1080 at 60 Hz</li> </ul>
<b>LAN</b>	2 x RJ45 GbE LAN
<b>USB</b>	<ul style="list-style-type: none"> <li>• <b>4 x USB 3.0:</b> I/O coastline connectors</li> <li>• <b>2 x USB 2.0:</b> via an on-board pin headers</li> </ul>
<b>Serial</b>	<b>4 x COM ports:</b> <ul style="list-style-type: none"> <li>• COM1: RS-232/422/485 (I/O coastline DB9 connector, jumper-less selection)</li> <li>• COM2, COM3, COM4: RS-232 only (via on-board box-headers)</li> </ul>
<b>SATA</b>	2 x SATA III
<b>Audio</b>	On-board audio connector for Line-In, Line-Out, and Mic-In
<b>Digital IO</b>	4-In & 4-Out
<b>Expansion Slots</b>	1 x Mini-PCIe slot (x 1, full-size) with mSATA
<b>Environment</b>	
<b>Temperature</b>	<ul style="list-style-type: none"> <li>• Operation: 0 ~ 60 °C (32 ~ 140 °F)</li> <li>• Storage: -20 ~ 80 °C (-4 ~ 176 °F)</li> </ul>
<b>Relative Humidity</b>	0 ~ 90 %, non-condensing at 60 °C

All specifications are subject to change without prior notice.

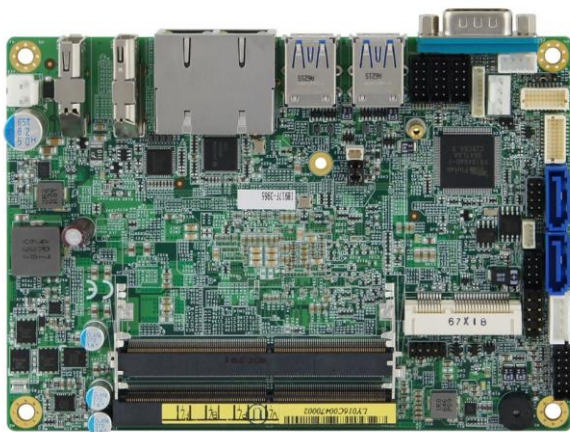
## 1.6 Block Diagram



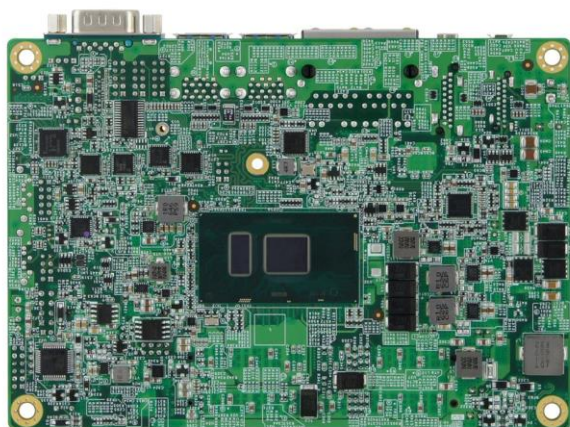


## 1.7 Overview

### Top View



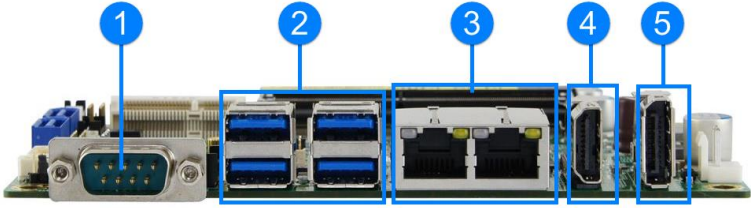
### Bottom View



Photos of IB917AF

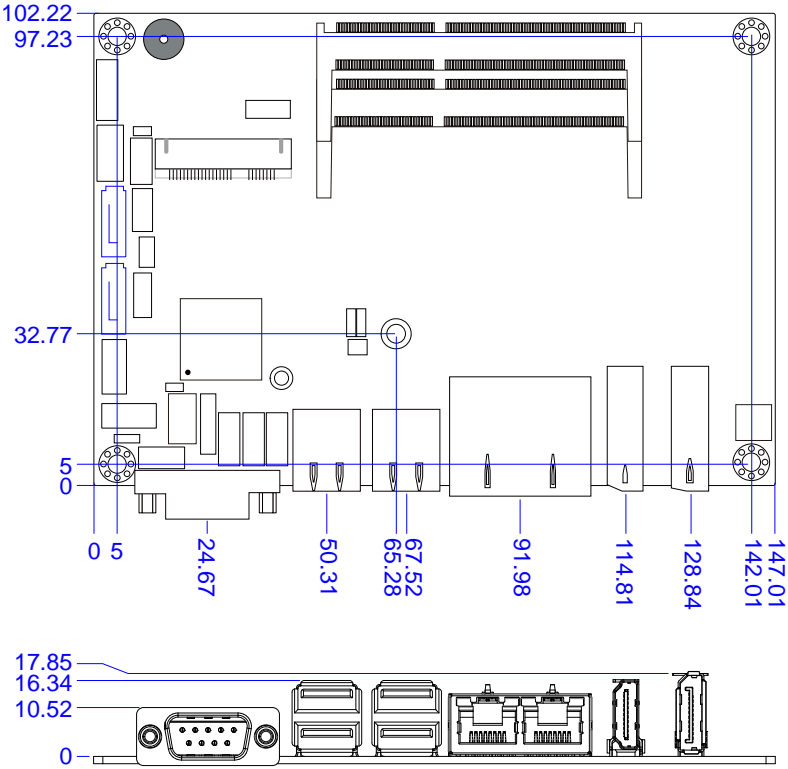
\* The photos above are for reference only. Some minor components may differ.

**I/O View**



No.	Name	No.	Name
1	COM1 RS-232/422/485 Port	4	HDMI Port
2	USB 3.0 Ports	5	DisplayPort
3	LAN Port		

# 1.8 Dimensions



This page is intentionally left blank.

# Chapter 2

## Hardware Configuration

This section provides information on jumper settings and connectors on the IB917 in order to set up a workable system. On top of that, you will also need to install crucial pieces such as the CPU and the memory before using the product. The topics covered are:

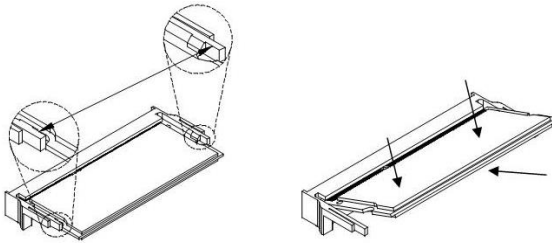
- Essential installations before you begin
- Jumper and connector locations
- Jumper settings and information of connectors

## 2.1 Essential Installations Before You Begin

Follow the instructions below to install the memory.

### 2.1.1 Installing the Memory

The IB917 series supports two DDR4 memory sockets for a maximum total memory of 32 GB. To install the modules, locate the memory slot on the board and perform the following steps:



1. Align the key of the memory module with that on the memory slot and insert the module slantwise.
2. Gently push the module in an upright position until the clips of the slot close to hold the module in place when the module touches the bottom of the slot.

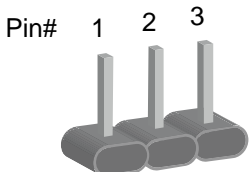
To remove the module, press the clips outwards with both hands, and the module will pop-up.

## 2.2 Setting the Jumpers

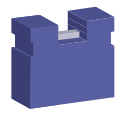
Set up and configure your IB917 by using jumpers for various settings and features according to your needs and applications. Contact your supplier if you have doubts about the best configuration for your use.

### 2.2.1 How to Set Jumpers

Jumpers are short-length conductors consisting of several metal pins with a non-conductive base mounted on the circuit board. Jumper caps are used to have the functions and features enabled or disabled. If a jumper has 3 pins, you can connect either PIN1 to PIN2 or PIN2 to PIN3 by shorting.



A 3-pin jumper



A jumper cap

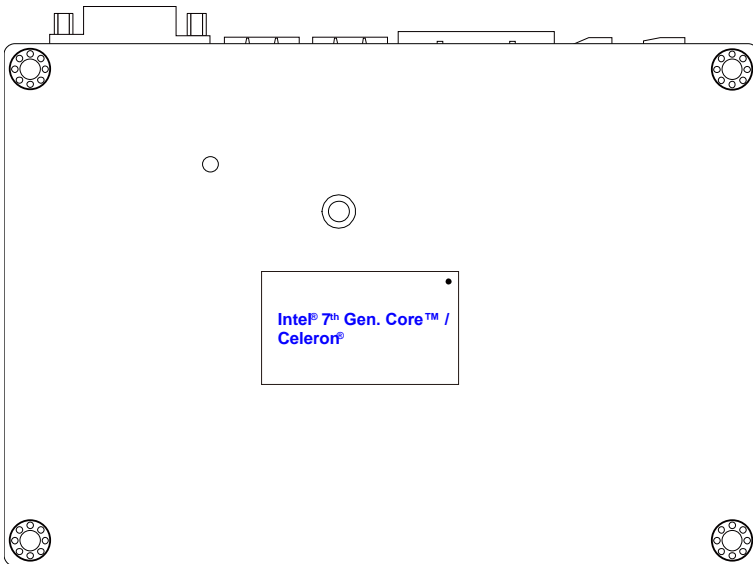
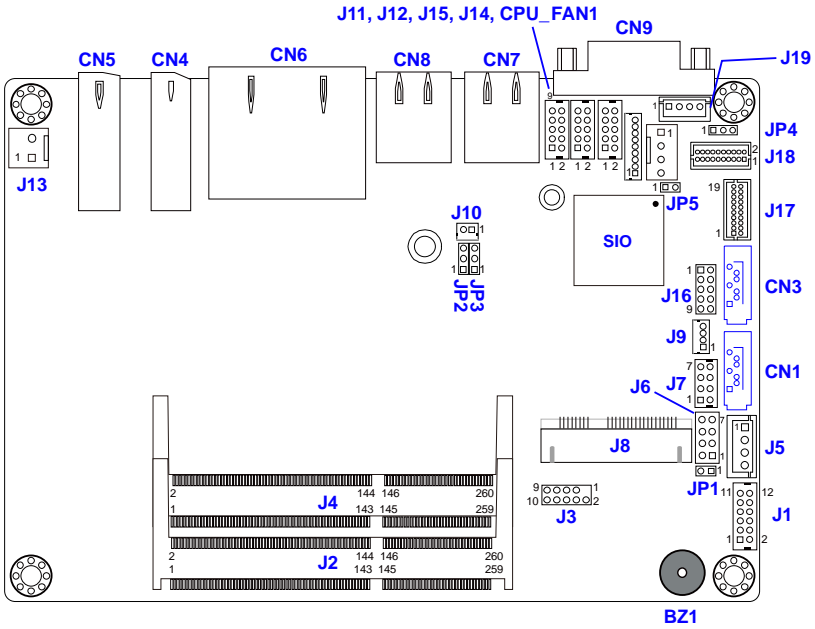
Refer to the illustration below to set jumpers.

Pin closed	Oblique view	Schematic illustration in the manual
Open		
1-2		
2-3		

When two pins of a jumper are encased in a jumper cap, this jumper is **closed**, i.e. turned **On**.

When a jumper cap is removed from two jumper pins, this jumper is **open**, i.e. turned **Off**.

## 2.3 Jumper & Connector Locations



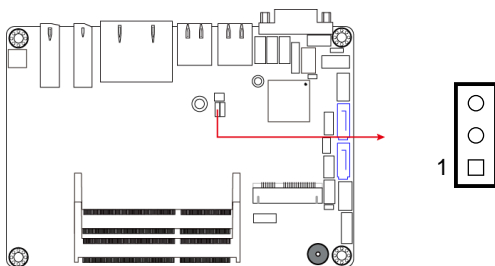
Board diagram of IB917



## 2.4 Jumpers Quick Reference

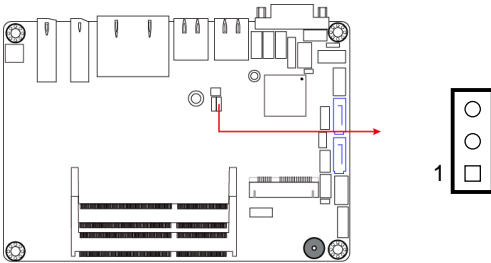
Function	Jumper Name	Page
CMOS Data Clearance	JP2	15
ME Register Clearance	JP3	16
LVDS Panel Power / Brightness Selections	JP4 (For power) / JP5 (For brightness)	16
Factory Use Only	JP1	- -

### 2.4.1 CMOS Data Clearance (JP2)



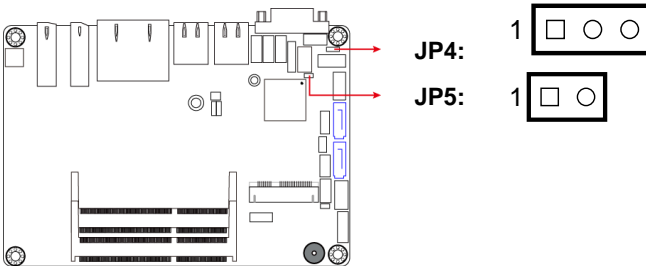
Function	Pin closed	Illustration
Normal (default)	1-2	
Clear CMOS	2-3	

### 2.4.2 ME Register Clearance (JP3)



Function	Pin closed	Illustration
Normal (default)	1-2	
Clear ME	2-3	

### 2.4.3 LVDS Panel Power / Brightness Selections (JP4 / JP5)

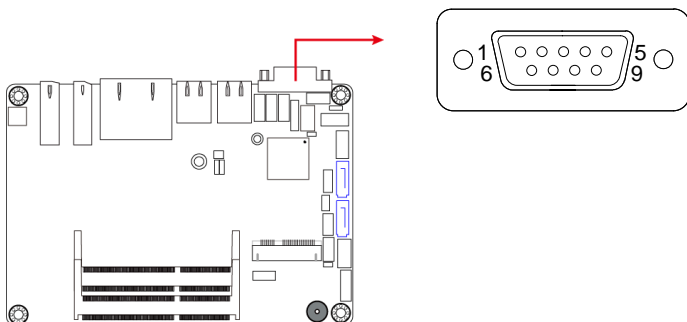


Jumper	Function	Pin closed	Illustration
JP4	3.3V (default)	1-2	
	5V	2-3	
JP5	3.3V (default)	Open	
	5V	Close	

## 2.5 Connectors Quick Reference

Function	Connector Name	Page
COM1 RS-232/422/485 Port	CN9	18
Audio Connector	J1	19
SATA HDD Power Connector	J5	19
Front Panel Setting Connector	J6	20
USB 2.0 Connector	J7	21
Battery Connector	J10	21
COM 2, COM3, COM4 RS-232 Ports	J15, J12, J11	22
DC Power Input Connector	J13	22
Digital I/O Connector	J16	23
LCD Backlight Connector	J19	23
LVDS Connectors	J17 (1 <sup>st</sup> channel), J18 (2 <sup>nd</sup> channel)	24
CPU Fan connector	CPU_FAN1	24
SATA III Port	CN1, CN3	--
HDMI 1.4 Port	CN4	--
Display Port	CN5	--
GbE LAN Ports	CN6	--
USB 3.0 Port	CN7, CN8	--
DDR4 SO-DIMM Slot	J2, J4	--
Mini-PCIe / mSATA Slot	J8	--
Factory Use Only	J3, J9, J14	--

## 2.5.1 COM1 RS-232/422/485 Port (CN9)

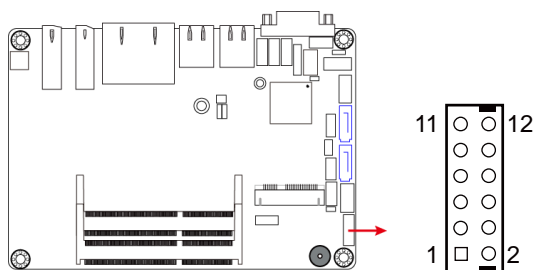


COM1 port is jumper-less and configurable in BIOS.

Pin	Assignment	Pin	Assignment
1	DCD, Data carrier detect	6	DSR, Data set ready
2	RXD, Receive data	7	RTS, Request to send
3	TXD, Transmit data	8	CTS, Clear to send
4	DTR, Data terminal ready	9	RI, Ring indicator
5	Ground		

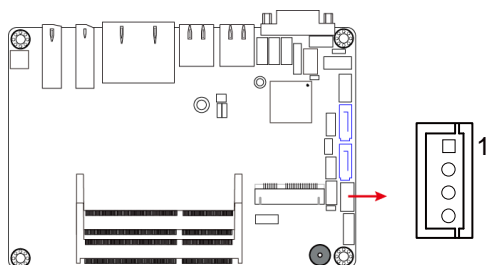
Pin	Assignment		
	RS-232	RS-422	RS-485
1	DCD	TX-	DATA-
2	RX	TX+	DATA+
3	TX	RX+	NC
4	DTR	RX-	NC
5	Ground	Ground	Ground
6	DSR	NC	NC
7	RTS	NC	NC
8	CTS	NC	NC
9	RI	NC	NC

### 2.5.2 Audio Connector (J1)



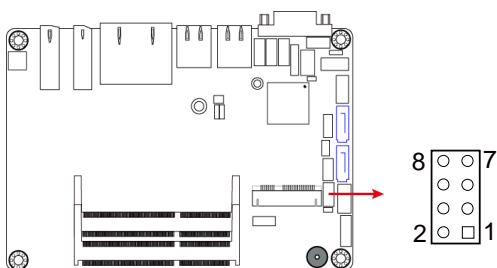
Pin	Assignment	Pin	Assignment
1	Lineout_L	2	Lineout_R
3	JD_FRONT	4	Ground
5	LINEIN_L	6	Linein_R
7	JD_LINEIN	8	Ground
9	MIC_L	10	MIC-R
11	JD_MIC1	12	Ground

### 2.5.3 SATA HDD Power Connector (J5)



Pin	Assignment	Pin	Assignment
1	+5V	3	Ground
2	Ground	4	+12V

## 2.5.4 Front Panel Connector (J6)

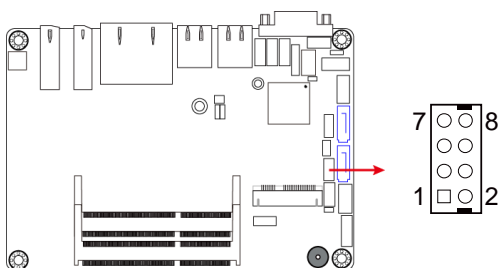


Pin	Assignment	Pin	Assignment
1	Ground	2	PWR_BTN
3	3.3V	4	HDD Active
5	Ground	6	Reset
7	+5V	8	Ground

J6 is utilized for system indicators to provide light indication of the computer activities and switches to change the computer status. It provides interfaces for the following functions.

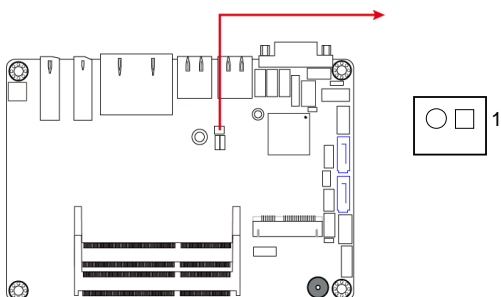
- ATX Power ON Switch (Pins 1 and 2)**  
 The 2 pins makes an “ATX Power Supply On/Off Switch” for the system that connects to the power switch on the case. When pressed, the power switch will force the system to power on. When pressed again, it will power off the system.
- Hard Disk Drive LED Connector (Pins 3 and 4)**  
 This connector connects to the hard drive activity LED on control panel. This LED will flash when the HDD is being accessed.
- Reset Switch (Pins 5 and 6)**  
 The reset switch allows you to reset the system without turning the main power switch off and then on again. Orientation is not required when making a connection to this header.
- Power LED: Pins 7 and 8**  
 This connector connects to the system power LED on control panel. This LED will light when the system turns on.

### 2.5.5 USB 2.0 Connector (J7)



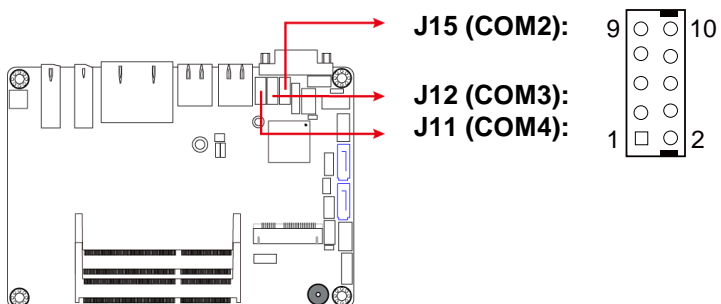
Pin	Assignment	Pin	Assignment
1	VCC	2	Ground
3	D0-	4	D1+
5	D0+	6	D1-
7	Ground	8	VCC

### 2.5.6 Battery Connector (J10)



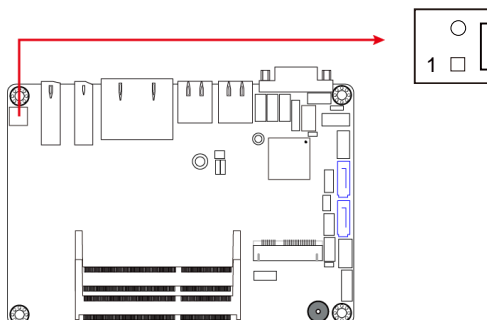
Pin	Assignment
1	Battery+
2	Ground

## 2.5.7 COM2, COM3, COM4 RS-232 Ports (J15, J12, J11)



Pin	Assignment	Pin	Assignment
1	DCD, Data carrier detect	2	RXD, Receive data
3	TXD, Transmit data	4	DTR, Data terminal ready
5	Ground	6	DSR, Data set ready
7	RTS, Request to send	8	CTS, Clear to send
9	RI, Ring indicator	10	Not Used

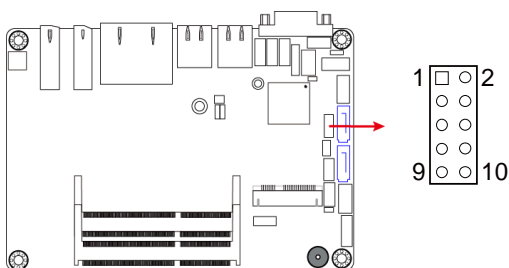
## 2.5.8 DC Power Input Connector (J13)



Pin	Assignment
1	+9V ~ +24V
2	Ground

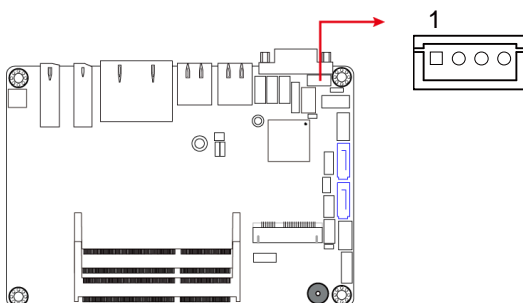


### 2.5.9 Digital I/O Connector (J16)



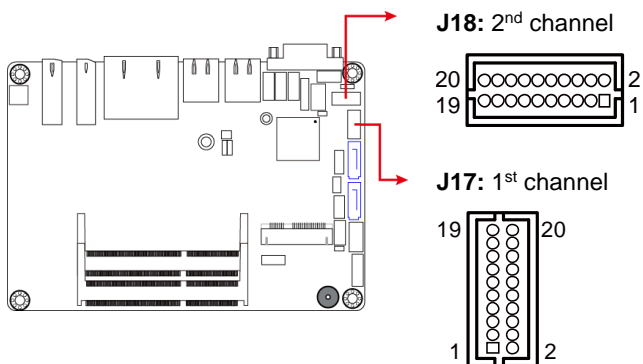
Pin	Assignment	Pin	Assignment
1	Ground	2	VCC
3	OUT3	4	OUT1
5	OUT2	6	OUT0
7	IN3	8	IN1
9	IN2	10	IN0

### 2.5.10 LCD Backlight Connector (J19)



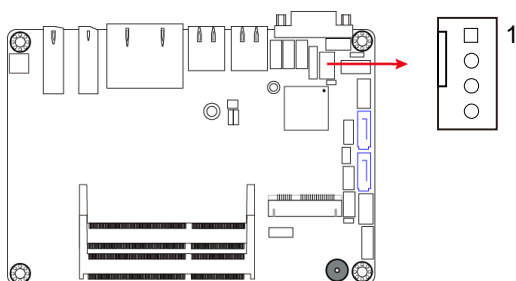
Pin	Assignment	Pin	Assignment
1	+12V	3	Brightness Control
2	Backlight Enable	4	Ground

### 2.5.11 LVDS Connector (J17, J18)



Pin	Assignment	Pin	Assignment
1	TX0P	2	TX0N
3	Ground	4	Ground
5	TX1P	6	TX1N
7	Ground	8	Ground
9	TX2P	10	TX2N
11	Ground	12	Ground
13	CLKP	14	CLKN
15	Ground	16	Ground
17	TX3P	18	TX3N
19	Power	20	Power

### 2.5.12 CPU Fan Connector (CPU\_FAN1)



Pin	Assignment	Pin	Assignment
1	Ground	3	CPU Fan In
2	12V	4	CPU Fan Out

# Chapter 3

## Drivers Installation

This chapter introduces installation of the following drivers:

- Intel® Chipset Software Installation Utility
- VGA Driver
- HD Audio Driver
- LAN Driver
- Intel® Management Engine Drivers Installation

## 3.1 Introduction

This section describes the installation procedures for software and drivers. The software and drivers are included with the motherboard. If you find anything missing, please contact the distributor where you made the purchase. The contents of this section include the following:

---

**Note:** After installing your Windows operating system, you must install the Intel® Chipset Software Installation Utility first before proceeding with the drivers installation.

---

## 3.2 Intel® Chipset Software Installation Utility

The Intel® Chipset drivers should be installed first before the software drivers to install INF files for Plug & Play function for Intel chipset components. Follow the instructions below to complete the installation.

1. Insert the disk enclosed in the package with the board. Click **Intel** on the left pane and then **Intel(R) Kabylake-U Chipset Drivers** on the right pane.



2. Click **Intel(R) Chipset Software Installation Utility**.



3. When the *Welcome* screen to the Intel® Chipset Device Software appears, click **Next** to continue.
4. Accept the software license agreement and proceed with the installation process.
5. On the *Readme File Information* screen, click **Install** for installation.
6. After the installation, restart the computer for changes to take effect.

### 3.3 VGA Driver Installation

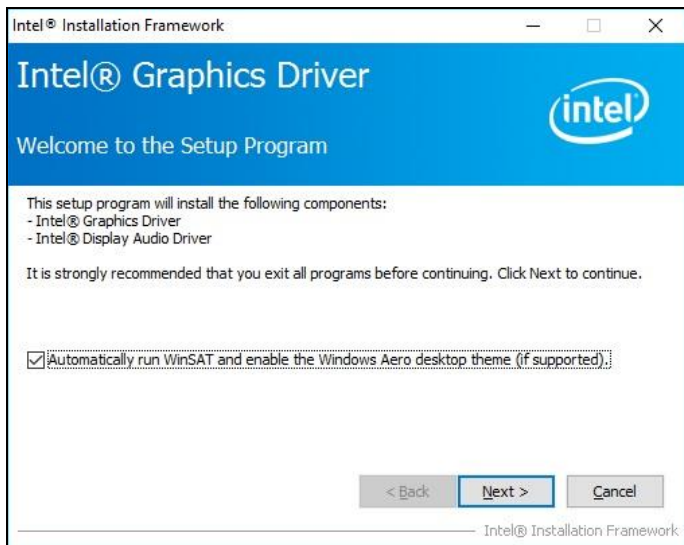
1. Insert the disk enclosed in the package with the board. Click **Intel** on the left pane and then **Intel(R) Kabylake-U Chipset Drivers** on the right pane.



2. Click **Intel(R) HD Graphics Driver**.



- When the *Welcome* screen appears, click **Next** to continue.



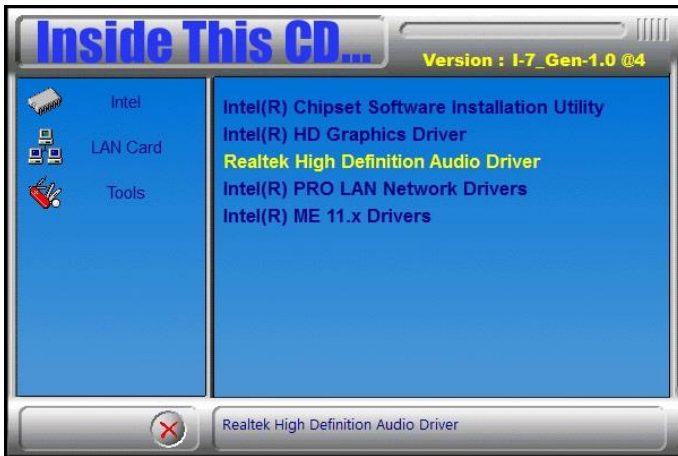
- Click **Yes** to accept the license agreement and click **Next** until the installation starts.
- On the *Readme File Information* screen, click **Next** until the installation starts.
- After the installation, restart the computer for changes to take effect.

### 3.4 HD Audio Driver Installation

1. Insert the disk enclosed in the package with the board. Click **Intel** on the left pane and then **Intel(R) Kabylake-U Chipset Drivers** on the right pane.

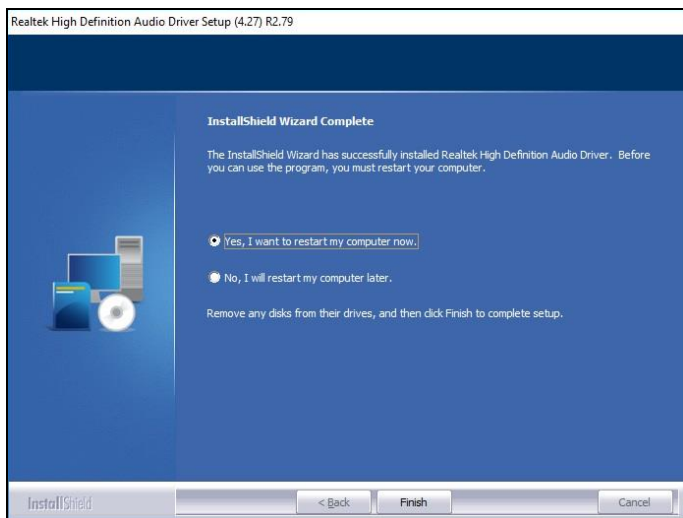


2. Click **Realtek High Definition Audio Driver**.





3. On the *Welcome* screen of the InstallShield Wizard, click **Next**.



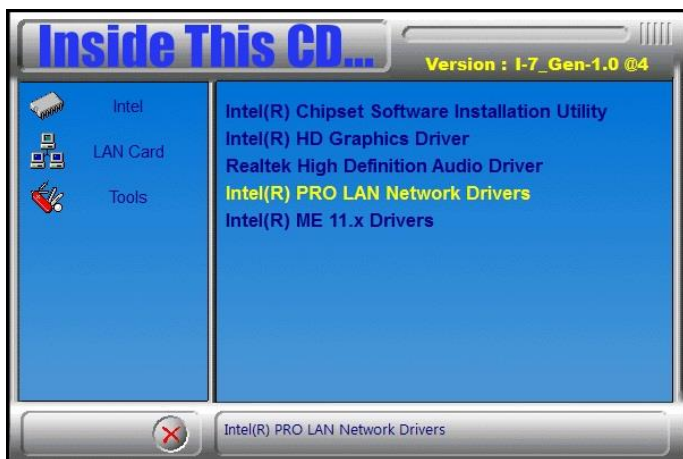
4. Click **Next** until the installation starts.
5. After the installation, restart the computer for changes to take effect.

### 3.5 LAN Driver Installation

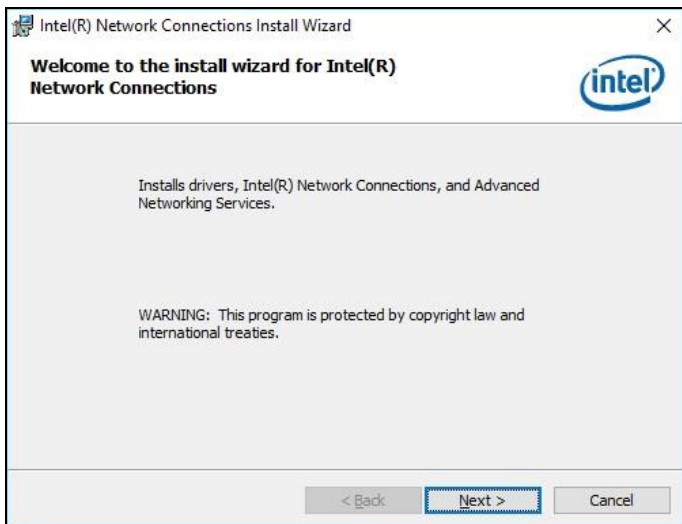
1. Insert the disk enclosed in the package with the board. Click **Intel** on the left pane and then **Intel(R) Kabylake-U Chipset Drivers** on the right pane.



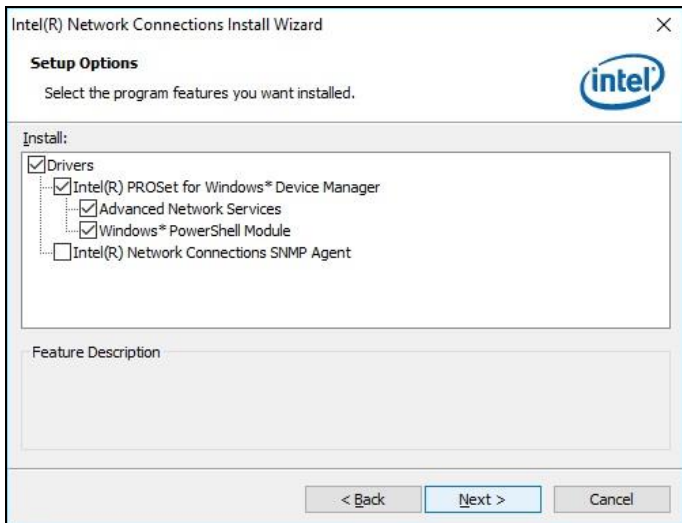
2. Click **Intel(R) PRO LAN Network Drivers..**



- When the *Welcome* screen appears, click **Next**.



- Accept the license agreement and click **Next**.
- On the *Setup Options* screen, click the checkbox to select the desired driver(s) for installation. Then click **Next** to continue.



- The wizard is ready for installation. Click **Install**.
- After the installation, restart the computer for changes to take effect.

### 3.6 Intel® Management Engine Drivers Installation

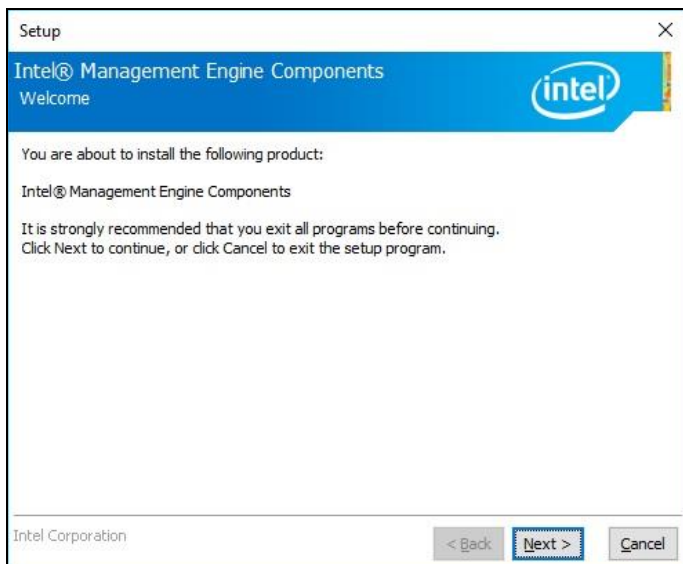
1. Insert the disk enclosed in the package with the board. Click **Intel** on the left pane and then **Intel(R) Kabylake-U Chipset Drivers** on the right pane.



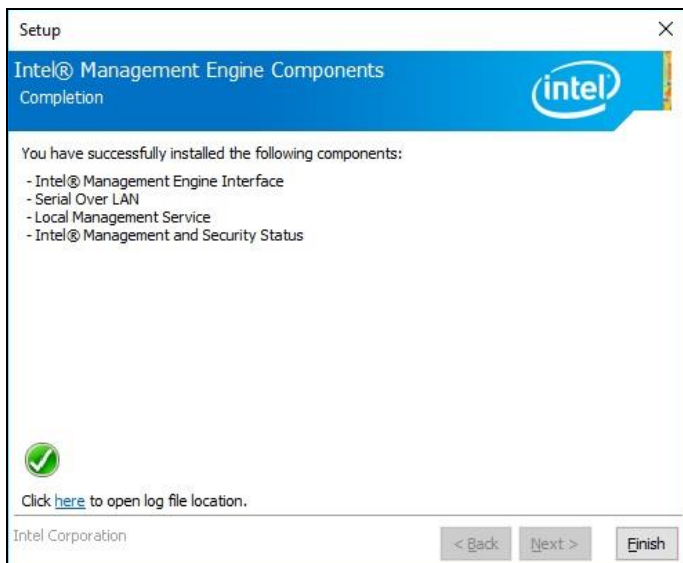
2. Click **Intel(R) ME 11.x Drivers**.



- When the *Welcome* screen appears, click **Next**.



- Accept the license agreement and click **Next** until the installation starts.
- After the installation, restart the computer for changes to take effect.



This page is intentionally left blank.

# Chapter 4

## BIOS Setup

This chapter describes the different settings available in the AMI BIOS that comes with the board. The topics covered in this chapter are as follows:

- Main Settings
- Advanced Settings
- Chipset Settings
- Security Settings
- Boot Settings
- Save & Exit

## 4.1 Introduction

The BIOS (Basic Input/Output System) installed in the ROM of your computer system supports Intel® processors. The BIOS provides critical low-level support for standard devices such as disk drives, serial ports and parallel ports. It also provides password protection as well as special support for detailed fine-tuning of the chipset controlling the entire system.

## 4.2 BIOS Setup

The BIOS provides a Setup utility program for specifying the system configurations and settings. The BIOS ROM of the system stores the Setup utility. When you turn on the computer, the BIOS is immediately activated. Press the <Del> key immediately allows you to enter the Setup utility. If you are a little bit late pressing the <Del> key, POST (Power On Self Test) will continue with its test routines, thus preventing you from invoking the Setup.

If you still need to enter Setup, restart the system by pressing the "Reset" button or simultaneously pressing the <Ctrl>, <Alt> and <Delete> keys. You can also restart by turning the system Off and back On again.

The following message will appear on the screen:

```
Press <DEL> to Enter Setup
```

In general, press the arrow keys to highlight items, <Enter> to select, the <PgUp> and <PgDn> keys to change entries, <F1> for help, and <Esc> to quit.

When you enter the BIOS Setup utility, the *Main Menu* screen will appear on the screen. The Main Menu allows you to select from various setup functions and exit choices.

---

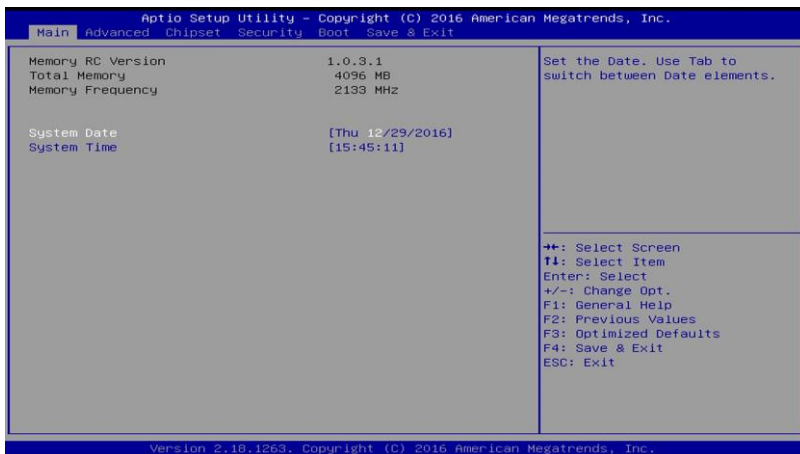
**Warning:** It is strongly recommended that you avoid making any changes to the chipset defaults.

These defaults have been carefully chosen by both AMI and your system manufacturer to provide the absolute maximum performance and reliability. Changing the defaults could make the system unstable and crash in some cases.

---



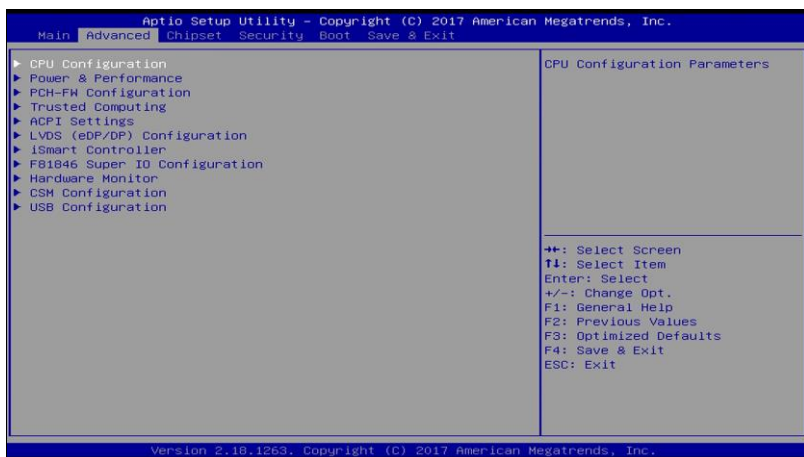
### 4.3 Main Settings



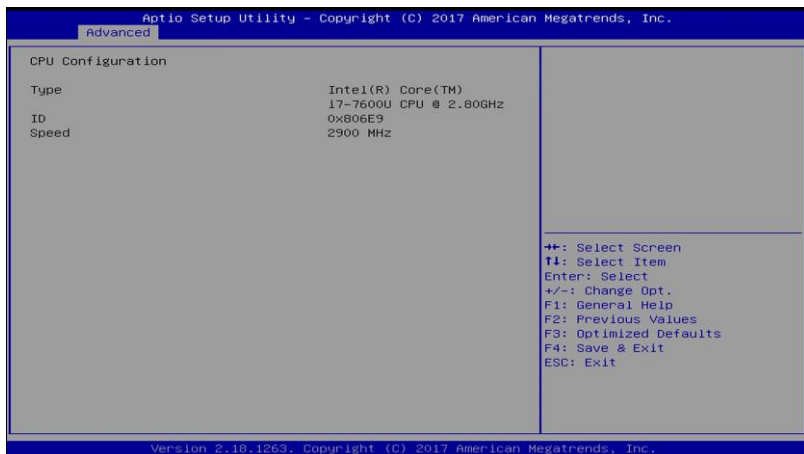
BIOS Setting	Description
System Date	Sets the date. Use the <Tab> key to switch between the data elements.
System Time	Set the time. Use the <Tab> key to switch between the data elements.

## 4.4 Advanced Settings

This section allows you to configure, improve your system and allows you to set up some system features according to your preference.



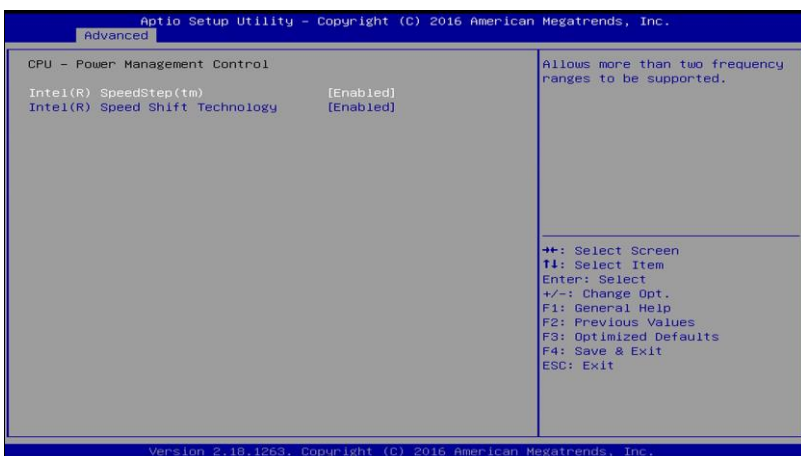
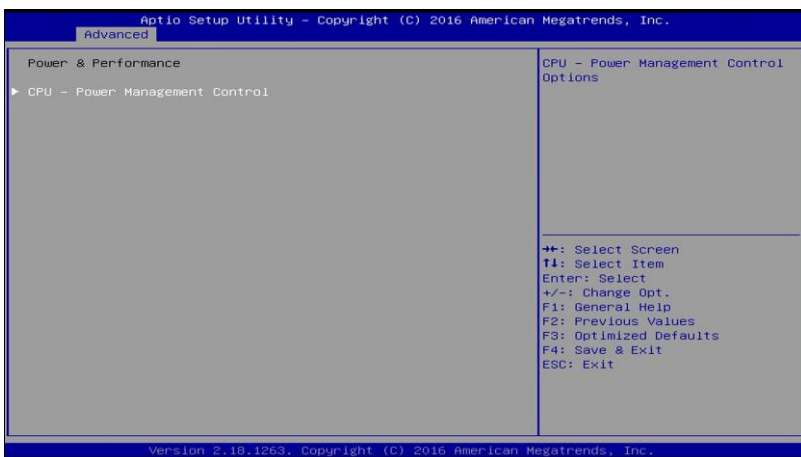
### 4.4.1 CPU Configuration



Displays the type, ID and speed of the CPU.

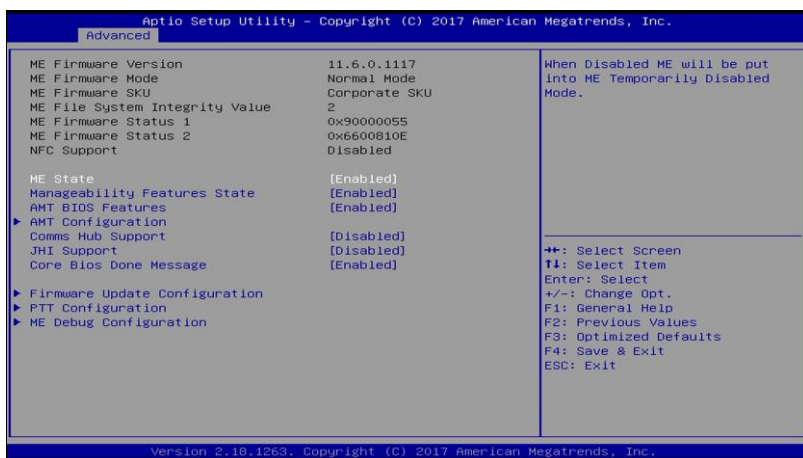
**Note:** The CPU information displayed varies upon your actual CPU type.

## 4.4.2 Power & Performance



BIOS Setting	Description
Intel(R) SpeedStep(tm)	Allows more than two frequency ranges to be supported.
Intel(R) Speed Shift Technology	Enables / Disables Intel(R) Speed Shift Technology support. Enabling will expose the CPPC v2 interface to allow for hardware controlled P-states.

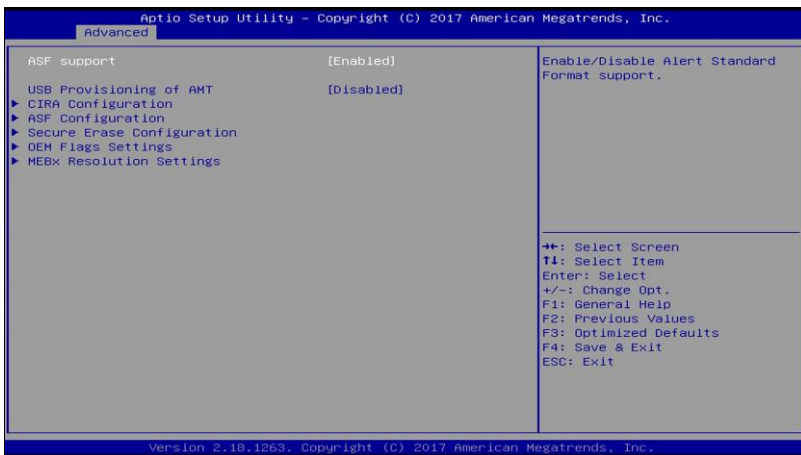
### 4.4.3 PCH-FW Configuration



BIOS Setting	Description
ME State	When disabled ME will be put into ME Temporarily Disabled Mode.
Manageability Features State	Enables / Disables Intel(R) manageability features in FW. To disable support platform must be in an unprovisioned state first.
AMT BIOS Features	When disabled AMT BIOS features are no longer supported and user is no longer able to access MEBx Setup. <b>Note:</b> This option does not disable manageability features in FW.
AMT Configuration	Configures Intel(R) Active Management Technology Parameters.
Comms Hub Support	Enables / Disables support for Comms Hub.
JHI Support	Enables / Disables Intel(R) DAL Host Interface Service (JHI).
Core BIOS Done Message	Enables / Disables Core BIOS done message sent to ME.
Firmware Update Configuration	Configures Management Engine Technology parameters.
PTT Configuration	Configures PTT capability or state.

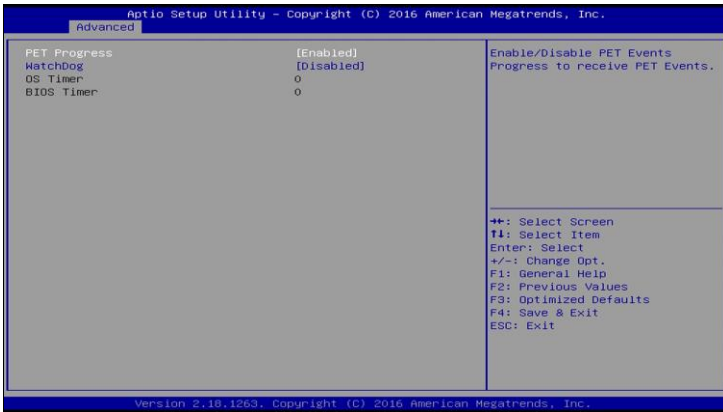
BIOS Setting	Description
ME Debug Configuration	Configures ME debug options.  <b>Note:</b> This menu is provided for testing purposes. It is recommended to leave the options in their default states.

#### 4.4.3.1. AMT Configuration



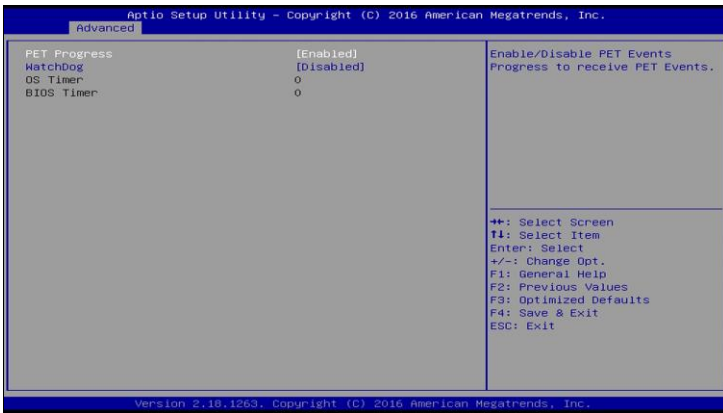
BIOS Setting	Description
ASF Support	Enables / Disables Alert Standard Format support.
USB Provisioning of AMT	Enables / Disables of AMT USB provisioning.
CIRA Configuration	Configures remote assistance process parameters.
ASF Configuration	Configures Alert Standard Format parameters.
Secure Erase Configuration	Secures erase configuration menu.
OEM Flags Settings	Configures OEM Flags.
MEBx Resolution Settings	Shows resolution settings for MEBx display modes.

**CIRA Configuration**



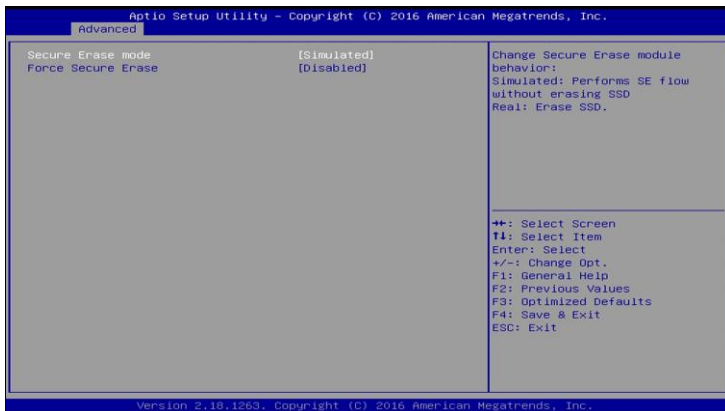
BIOS Setting	Description
Activate Remote Assistance Process	Trigger CIRA boot. <b>Note:</b> Network Access must be activated first from MEBx Setup.

**ASF Configuration**



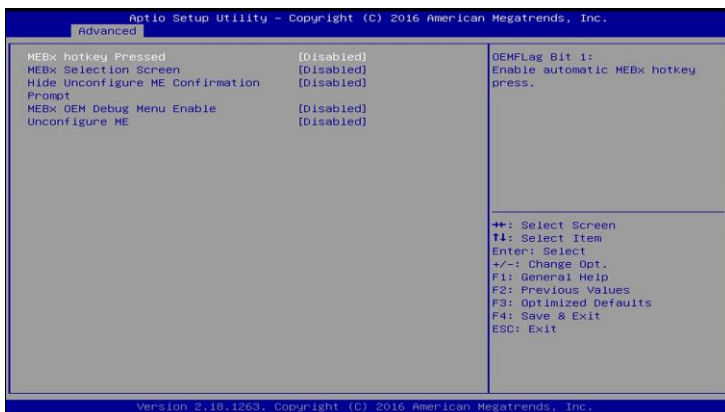
BIOS Setting	Description
PET Progress	Enables / Disables PET events progress to receive PET events.
WatchDog	Enables / Disables the watchdog timer.

Secure Erase Configuration:



BIOS Setting	Description
Secure Erase Mode	Changes Secure Erase module behavior. <ul style="list-style-type: none"> <li>• <b>Simulated</b> performs SE flow without erasing SSD.</li> <li>• <b>Real</b> erases SSD.</li> </ul>
Force Secure Erase	Force Secure Erase on next boot.

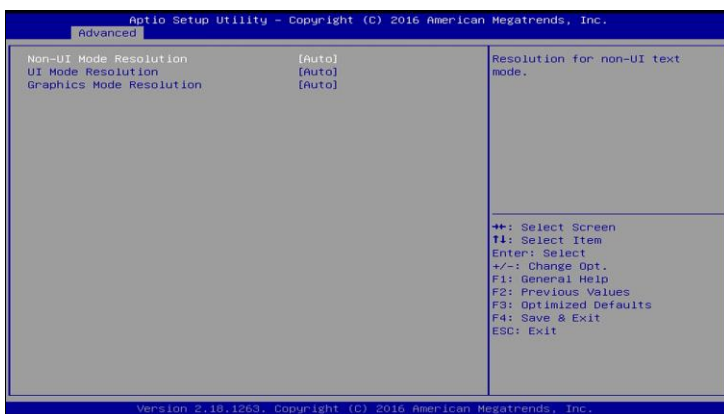
OEM Flags Settings:



BIOS Setting	Description
MEBx hotkey Pressed	OEMFlag Bit 1: enables automatic MEBx hotkey press.

BIOS Setting	Description
OEMFlag Bit 1	Enables / Disables Automatic MEBx hotkey press.
MEBx Selection Screen	OEMFlag Bit 2: enables MEBx selection screen with 2 options. <ul style="list-style-type: none"> <li>Press <b>1</b> to enter ME configuration screens.</li> <li>Press <b>2</b> to initiate a remote connection.</li> </ul> <b>Note:</b> Network access must be activated from MEBx Setup for this screen to be displayed.
Hide Unconfigure ME Confirmation Prompt	OEMFlag Bit 6: hides the unconfigure ME confirmation prompt when attempting ME unconfiguration.
MEBx OEM Debug Menu Enable	OEMFlag Bit 14: enables OEM debug menu in MEBx.
Unconfigure ME	OEMFlag Bit 15: Unconfigures ME with resetting MEBx password to default.

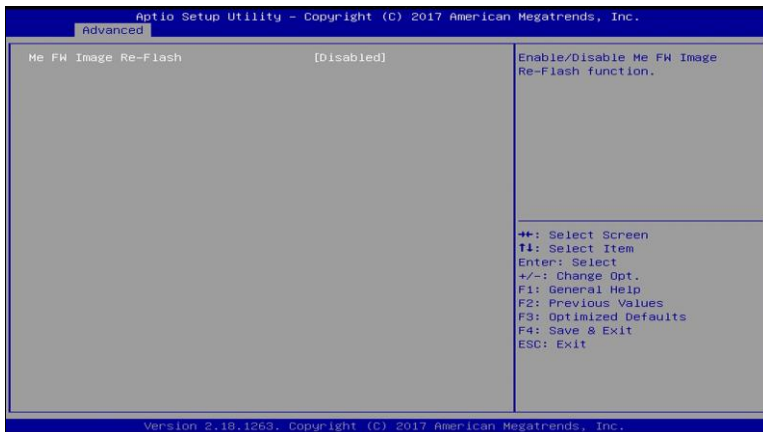
MEBx Resolution Settings:



BIOS Setting	Description
Non-UI Mode Resloution	Sets resolution fro non-UI text mode.
UI Mode Resolution	Sets resolution for UI text mode.
Graphics Mode Resolution	Sets resolution for graphics mode.

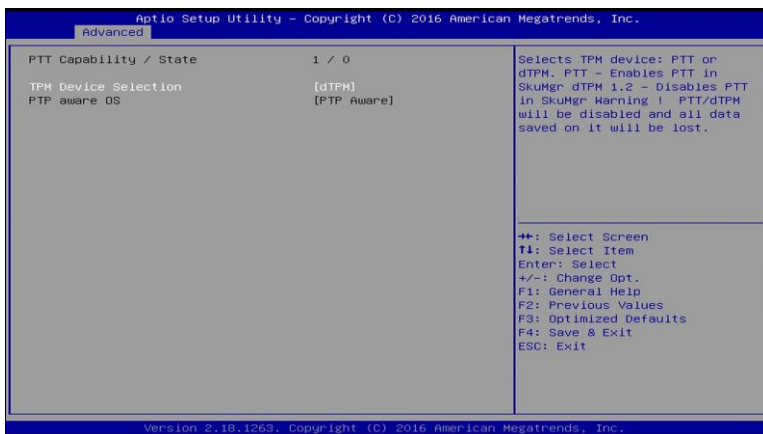


### 4.4.3.2. Firmware Update Configuration



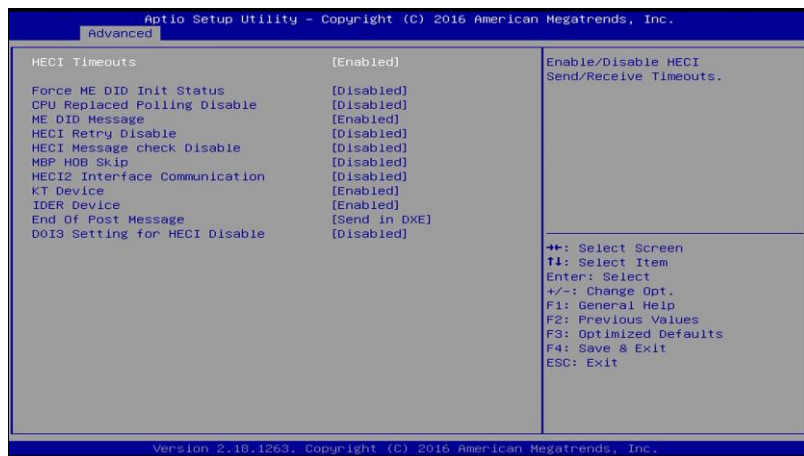
BIOS Setting	Description
ME FW Image RE-Flash	Enables / Disables ME FW Image Re-Flash function.

### 4.4.3.3. PTT Configuration



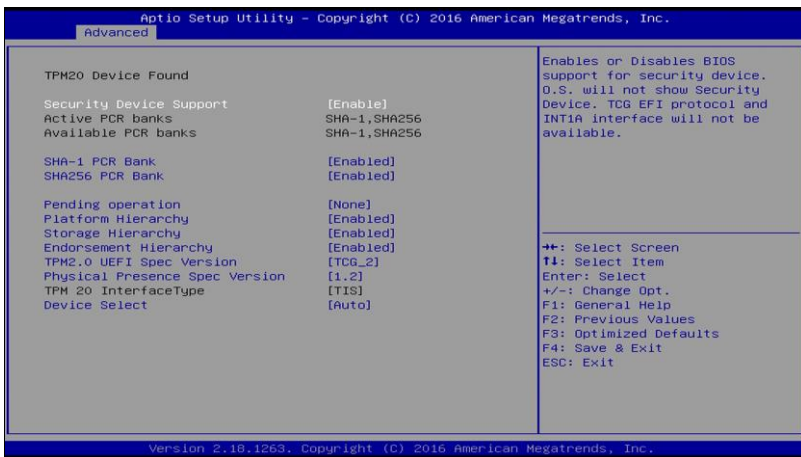
BIOS Setting	Description
TPM Device Selection	Selects TPM device: PTT or dTPM. <ul style="list-style-type: none"> <li>• <b>PTT</b> enables PTT in SkuMgr.</li> <li>• <b>dTPM 1.2</b> disables PTT in SkuMgr warning. PTT/dTPM will be disabled and all data saved on it will be lost.</li> </ul>

#### 4.4.3.4. ME Debug Configuration



BIOS Setting	Description
HECI Timeouts	Enables / Disables HECI sending/receiving timeouts.
Force ME DID Init Status	Forces the DID initialization status value.
CPU Replaced Polling Disable	Disables CPU replacement polling loop.
ME DID Message	Enables / Disables ME DID message (disable will prevent the DID message from being sent).
HECI Retry Disable	Setting this option disables retry mechanism for all HECI APIs.
HECI Message Check Disable	Disables message check for BIOS boot path when sending messages.
MBP HDB Skip	Enables / Disables skip of MBP HDB.
HECI2 Interface Communicationn	Adds / Removes HECI2 device from PCI space.
KT Device	Enables / Disables KT device.
IDER Device	Enables / Disables IDER device.
End of Post Message	Enables / Disables end of Post message sent to ME.
DOI3 Setting for HECI Disable	Disables setting DOI3 bit for all HECI devices.

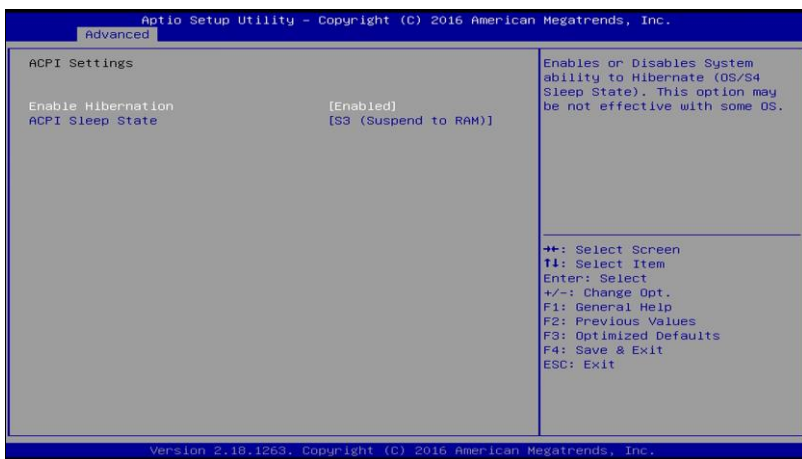
### 4.4.4 Trusted Computing



BIOS Setting	Description
Security Device Support	Enables / Disables BIOS support for security device. OS will not show security device. TCG EFI protocol and INTIA interface will not be available.
SHA-1 PCR Bank	Enables / Disables SHA-1 PCR Bank.
SHA256 PCR Bank	Enables / Disables SHA256 PCR Bank.
Pending operation	Schedule an operation for the security device. Note: Your computer will reboot during restart in order to change state of security device.
Platform Hierarchy	Enables / Disables platform hierarchy.
Storage Hierarchy	Enables / Disables storage hierarchy.
Endorsement Hierarchy	Enables / Disables endorsement hierarchy.
TPM2.0 UEFI Spec Version	Selects the supported TCG version based o your OS. <ul style="list-style-type: none"> <li><b>TCG_1_2:</b> supports Windows 8 /10.</li> <li><b>TCG_2:</b> supports new TCG2 protocol and event format for Windows 10 or later.</li> </ul>

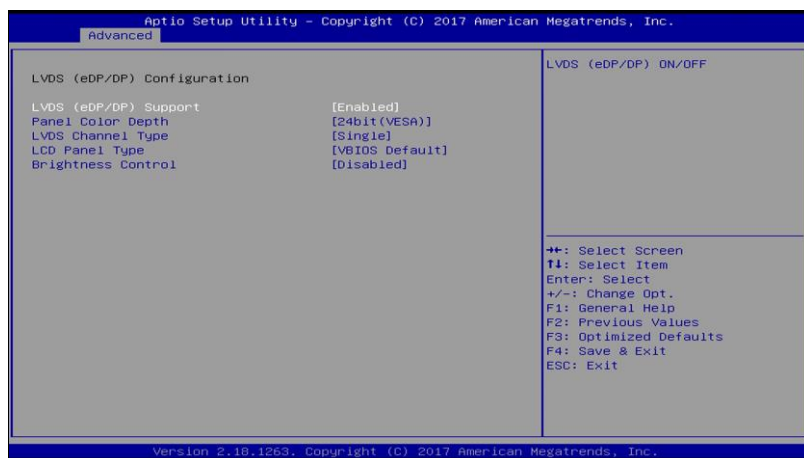
BIOS Setting	Description
Physical Presence Spec Version	Selects to show the PPI Spec Version (1.2 or 1.3) that the OS supports.  <b>Note:</b> Some HCK tests might not support 1.3.
Device Select	<ul style="list-style-type: none"><li>• <b>TPM 1.2</b> will restrict support to TPM 1.2 devices only.</li><li>• <b>TPM 2.0</b> will restrict support to TPM 2.0 devices only.</li><li>• <b>Auto</b> will support both with the default being set to TPM 2.0 devices if not found, and TPM 1.2 device will be enumerated.</li></ul>

### 4.4.5 ACPI Settings



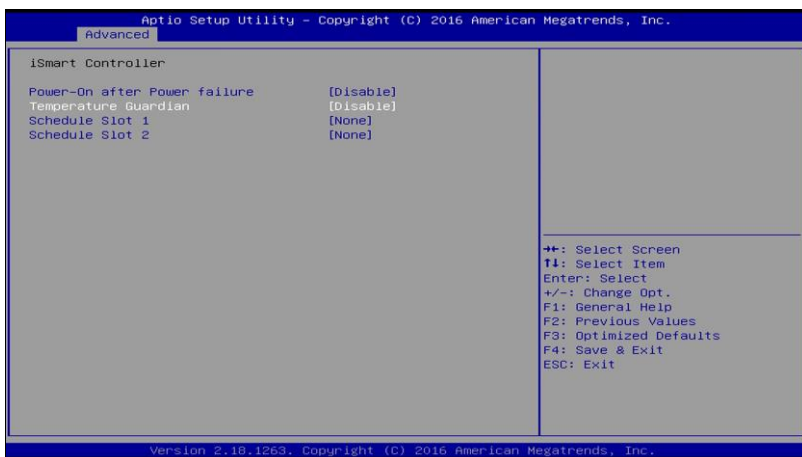
BIOS Setting	Description
Enable Hibernation	Enables / Disables the system ability to hibernate (OS/S4 Sleep State). This option may be not effective with some OS.
ACPI Sleep State	Selects an ACPI sleep state (Suspend Disabled or S3) where the system will enter when the Suspend button is pressed.

## 4.4.6 LVDS (eDP/DP) Configuration



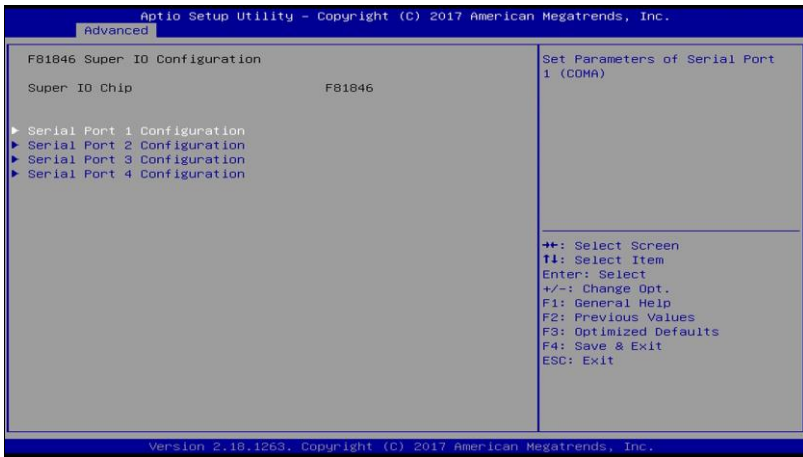
BIOS Setting	Description
LVDS (eDP/DP) Support	Enables / Disables LVDS (eDP/DP).
Panel Color Depth	Selects the panel color depth. Options: 18 bit, 24 Bit (VESA), 24 bit (JEIDA)
LVDS Channel Type	Chooses the LVDS as single or dual channel.
LCD Panel Type	Selects LCD panel used by Intel Graphics Device by selecting the appropriate setup item.  Resolution Options: VBIOS Default, 640 x 480, 800 x 600, 1024 x 768, 1280 x 1024, 1400 x 1050, 1366 x 768, 1600 x 1200, 1680 x 1050, 1920 x 1200, 1440 x 900, 1600 x 900, 1280 x 800, 1920 x 1080, 2048 x 1536
Brightness Control	Enables / Disables the brightness control.

## 4.4.7 iSMART Controller



BIOS Setting	Description
Power-On after Power failure	Enables / Disables the system to be turned on automatically after a power failure.
Temperature Guardian	Generate the reset signal when system hands up on POST.
Schedule Slots	<p>Sets up the hour / minute / day for the power-on schedule for the system.</p> <p>Options:</p> <ul style="list-style-type: none"> <li>• None</li> <li>• Power On</li> <li>• Power On / Off</li> </ul>

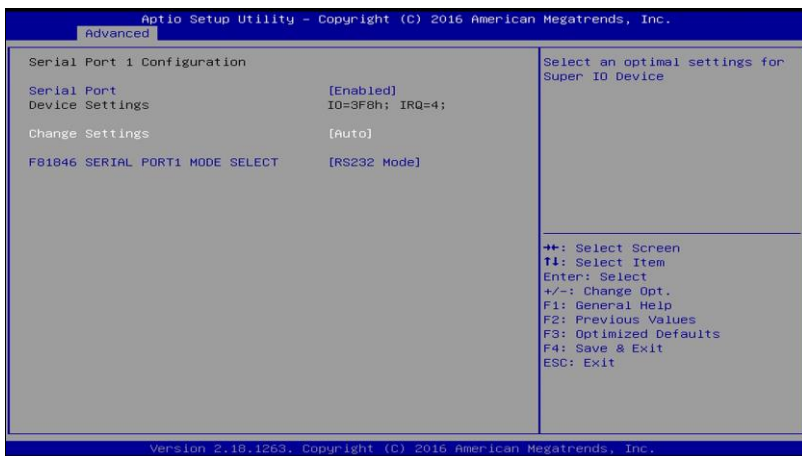
## 4.4.8 F81846 Super IO Configuration



BIOS Setting	Description
Serial Ports Configuration	Sets parameters of serial ports. Enables / Disables the serial port and select an optimal setting for the Super IO device.

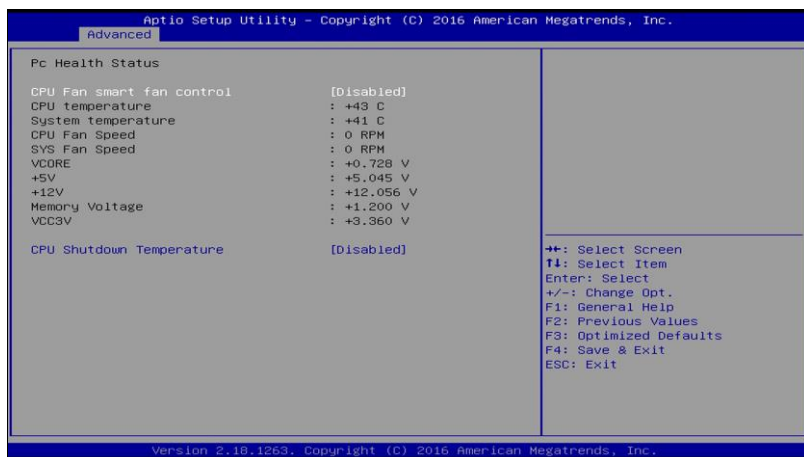


### 4.4.8.1. Serial Port 1 Configuration



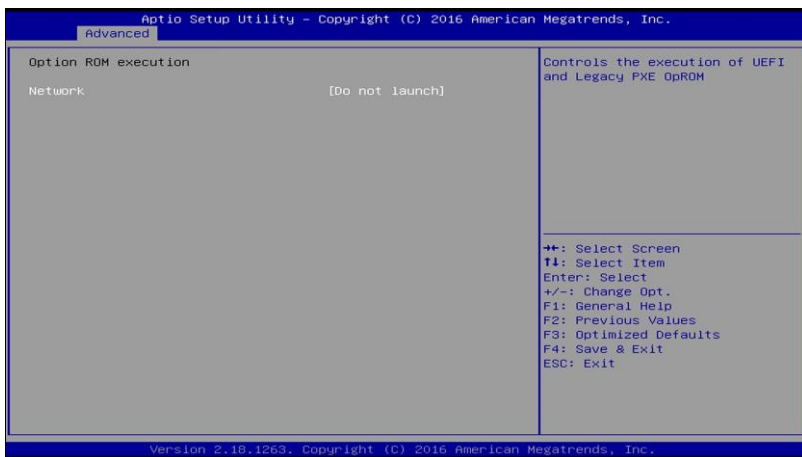
BIOS Setting	Description
Serial Port	Enables / Disables the serial port.
Change Settings	Selects an optimal settings for Super I/O device. Options: <ul style="list-style-type: none"> <li>• Auto</li> <li>• IO = 3F8h; IRQ = 4</li> <li>• IO = 3F8h; IRQ = 3, 4, 5, 6, 7, 9, 10, 11, 12</li> <li>• IO = 2F8h; IRQ = 3, 4, 5, 6, 7, 9, 10, 11, 12</li> <li>• IO = 3E8h; IRQ = 3, 4, 5, 6, 7, 9, 10, 11, 12</li> <li>• IO = 2E8h; IRQ = 3, 4, 5, 6, 7, 9, 10, 11, 12</li> </ul>
F81846 Serial Port 1 Mode Select	Changes the serial port mode to RS-232 / 422 / 485.

## 4.4.9 Hardware Monitor



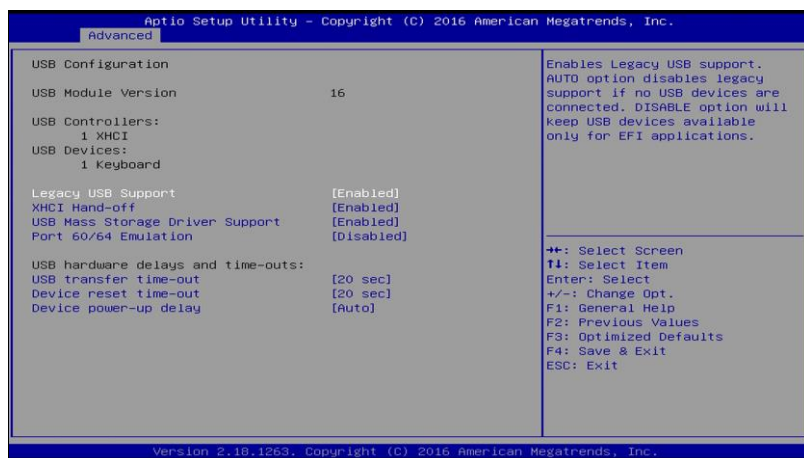
BIOS Setting	Description
CPU Fan smart fan control	Enables / Disables smart fan control.
Temperatures / Voltages	These fields are the parameters of the hardware monitoring function feature of the motherboard. The values are read-only values as monitored by the system and show the PC health status.
CPU Shutdown Temperature	Sets a threshold of temperature to shut down if CPU goes overheated.  Options: Disabled / 70 °C / 75 °C / 80 °C / 85 °C / 90 °C / 95 °C

### 4.4.10 CSM Configuration



BIOS Setting	Description
Network	Controls the execution of UEFI and Legacy PXE OpROM.

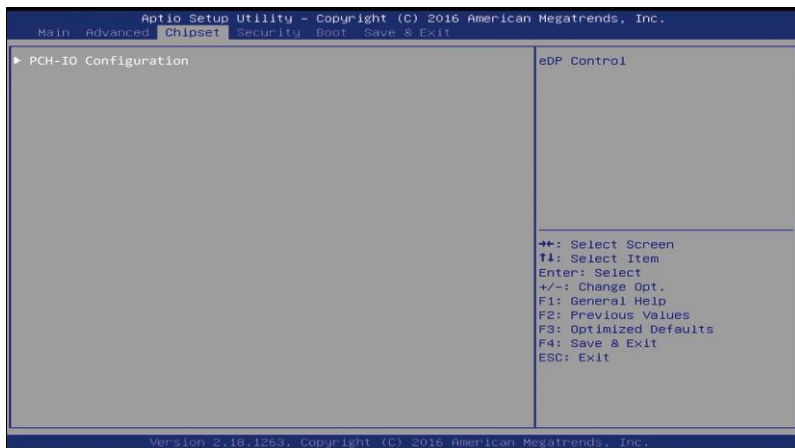
## 4.4.11 USB Configuration



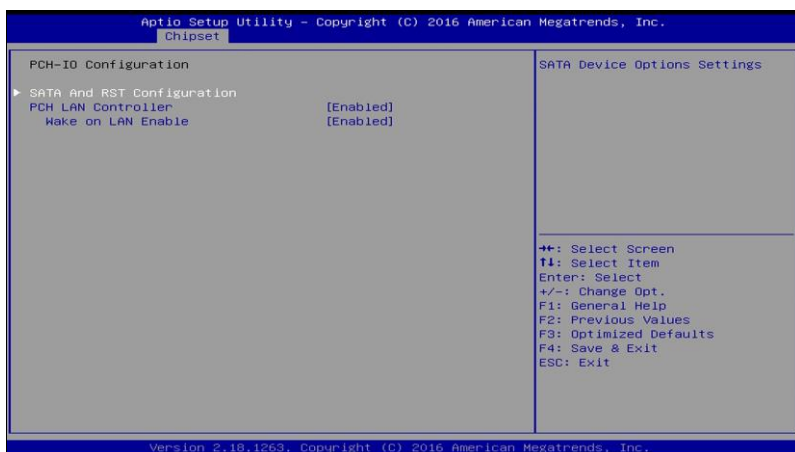
BIOS Setting	Description
Legacy USB Support	<ul style="list-style-type: none"> <li>• <b>Enabled</b> enables Legacy USB support.</li> <li>• <b>Auto</b> disables legacy support if there is no USB device connected.</li> <li>• <b>Disabled</b> keeps USB devices available only for EFI applications.</li> </ul>
XHCI Hand-off	This is a workaround for OSES without XHCI hand-off support. The XHCI ownership change should be claimed by XHCI driver.
USB Mass Storage Driver Support	Enables / Disables the support for USB mass storage driver.
Port 60/64 Emulation	Enables / Disables the support for I/O port 60h / 64h emulation. This should be enabled for the complete USB keyboard legacy support for non-USB aware OSES.
USB Transfer time-out	The time-out value (1 / 5 / 10 / 20 secs) for Control, Bulk, and Interrupt transfers.
Device reset time-out	Gives seconds (10 / 20 / 30 / 40 secs) to delay execution of Start Unit command to USB mass storage device.

BIOS Setting	Description
Device power-up delay	The maximum time the device will take before it properly reports itself to the Host Controller.  <b>Auto</b> uses default value for a Root port it is 100ms. But for a Hub port, the delay is taken from Hub descriptor.

## 4.5 Chipset Settings

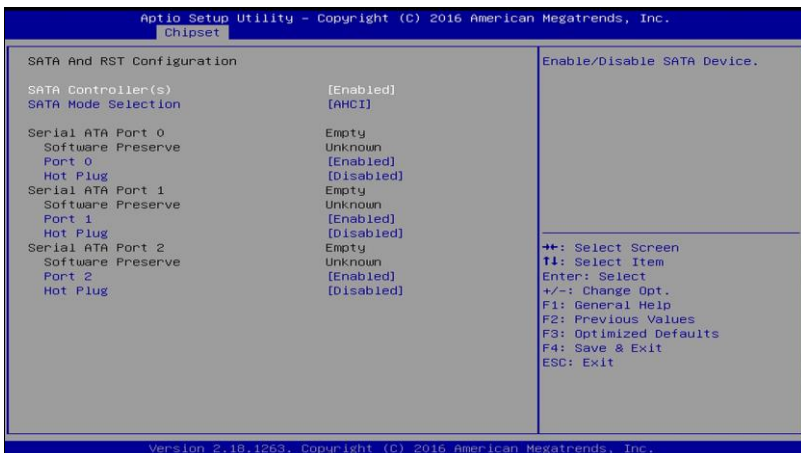


### 4.5.1 PCH-IO Configuration



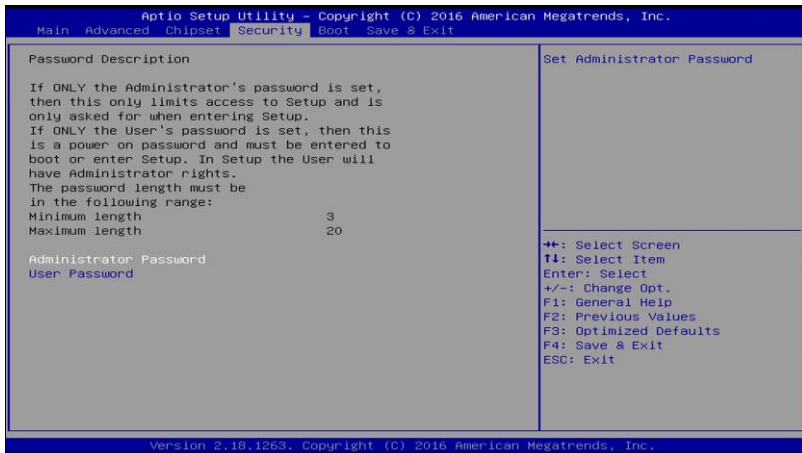
BIOS Setting	Description
SATA and RST Configuration	SATA device options and settings
PCH LAN Controller	Enables / Disables onboard NIC.
Wake on LAN Enable	Enables / Disables integrated LAN to wake the system.

### 4.5.1.1. SATA and RST Configuration:



BIOS Setting	Description
SATA Controller(s)	Enables / Disables the Serial ATA.
SATA Mode Selection	Selects IDE or AHCI Mode.
Serial ATA Port 0~2	Enables / Disables Serial Port 0 ~ 2.
SATA Ports Hot Plug	Enables / Disables SATA Ports HotPlug.

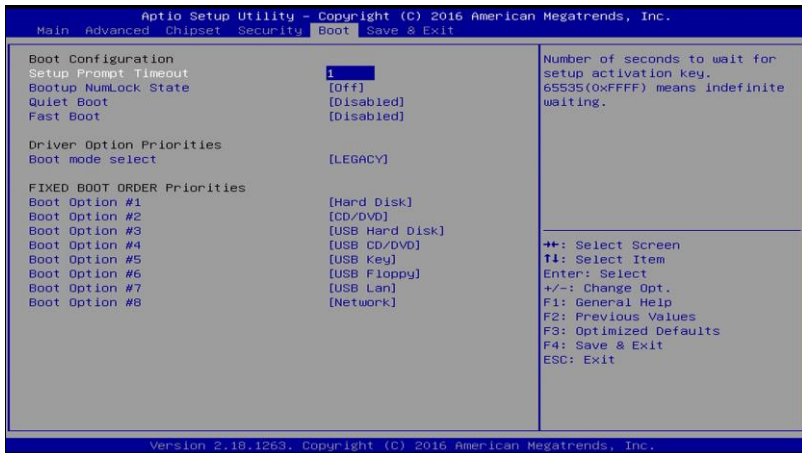
## 4.6 Security Settings



BIOS Setting	Description
Setup Administrator Password	Sets an administrator password for the setup utility.
User Password	Sets a user password.



## 4.7 Boot Settings



BIOS Setting	Description
Setup Prompt Timeout	Number of seconds to wait for setup activation key. 65535 (0xFFFF) means indefinite waiting.
Bootup NumLock State	Selects the keyboard NumLock state.
Quiet Boot	Enables / Disables Quiet Boot option.
Fast Boot	Enables / Disables boot with initialization of a minimal set of devices required to launch the active boot option. Has no effect for BBS boot options.
Boot mode select	Selects a Boot mode, Legacy / UEFI / Dual.
Boot Option Priorities	Sets the system boot order priorities for hard disk, CD/DVD, USB, Network.

## 4.8 Save & Exit Settings



BIOS Setting	Description
Save Changes and Exit	Exits system setup after saving the changes.
Discard Changes and Exit	Exits system setup without saving any changes.
Save Changes and Reset	Resets the system after saving the changes.
Discard Changes and Reset	Resets system setup without saving any changes.
Save Changes	Saves changes done so far to any of the setup options.
Discard Changes	Discards changes done so far to any of the setup options.
Restore Defaults	Restores / Loads defaults values for all the setup options.
Save as User Defaults	Saves the changes done so far as User Defaults.
Restore User Defaults	Restores the user defaults to all the setup options.

# Appendix

This section provides the mapping addresses of peripheral devices and the sample code of watchdog timer configuration.

## A. I/O Port Address Map

Each peripheral device in the system is assigned a set of I/O port addresses which also becomes the identity of the device. The following table lists the I/O port addresses used.

Address	Device Description
0x00000020-0x00000021	Programmable interrupt controller
0x00000024-0x00000025	Programmable interrupt controller
0x00000028-0x00000029	Programmable interrupt controller
0x0000002C-0x0000002D	Programmable interrupt controller
0x00000030-0x00000031	Programmable interrupt controller
0x00000034-0x00000035	Programmable interrupt controller
0x00000038-0x00000039	Programmable interrupt controller
0x0000003C-0x0000003D	Programmable interrupt controller
0x000000A0-0x000000A1	Programmable interrupt controller
0x000000A4-0x000000A5	Programmable interrupt controller
0x000000A8-0x000000A9	Programmable interrupt controller
0x000000AC-0x000000AD	Programmable interrupt controller
0x000000B0-0x000000B1	Programmable interrupt controller
0x000000B4-0x000000B5	Programmable interrupt controller
0x000000B8-0x000000B9	Programmable interrupt controller
0x000000BC-0x000000BD	Programmable interrupt controller
0x000004D0-0x000004D1	Programmable interrupt controller
0x00000A00-0x00000A0F	Motherboard resources
0x00000A10-0x00000A1F	Motherboard resources
0x00000A10-0x00000A1F	Motherboard resources
0x0000002E-0x0000002F	Motherboard resources
0x0000004E-0x0000004F	Motherboard resources
0x00000061-0x00000061	Motherboard resources

Address	Device Description
0x00000063-0x00000063	Motherboard resources
0x00000065-0x00000065	Motherboard resources
0x00000067-0x00000067	Motherboard resources
0x00000070-0x00000070	Motherboard resources
0x00000070-0x00000070	System CMOS/real time clock
0x00000080-0x00000080	Motherboard resources
0x00000092-0x00000092	Motherboard resources
0x000000B2-0x000000B3	Motherboard resources
0x00000680-0x0000069F	Motherboard resources
0x0000FFFF-0x0000FFFF	Motherboard resources
0x0000FFFF-0x0000FFFF	Motherboard resources
0x0000FFFF-0x0000FFFF	Motherboard resources
0x00001800-0x000018FE	Motherboard resources
0x0000164E-0x0000164F	Motherboard resources
0x00001854-0x00001857	Motherboard resources
0x000003F8-0x000003FF	Communications Port (COM1)
0x000002F8-0x000002FF	Communications Port (COM2)
0x000003E8-0x000003EF	Communications Port (COM3)
0x000002E8-0x000002EF	Communications Port (COM4)
0x00000000-0x00000CF7	PCI Express Root Complex
0x00000D00-0x0000FFFF	PCI Express Root Complex
0x00000040-0x00000043	System timer
0x00000050-0x00000053	System timer
0x0000E000-0x0000EFFF	Mobile 6th/7th Generation Intel(R) Processor Family I/O PCI Express Root Port #11 - 9D1A
0x0000F040-0x0000F05F	Mobile 6th/7th Generation Intel(R) Processor Family I/O SMBUS - 9D23

Address	Device Description
0x0000FF00-0x0000FFFE	Motherboard resources
0x00000060-0x00000060	Standard PS/2 Keyboard
0x00000064-0x00000064	Standard PS/2 Keyboard
0x0000F090-0x0000F097	Standard SATA AHCI Controller
0x0000F080-0x0000F083	Standard SATA AHCI Controller
0x0000F060-0x0000F07F	Standard SATA AHCI Controller
0x0000F000-0x0000F03F	Intel(R) HD Graphics 620
0x000003B0-0x000003BB	Intel(R) HD Graphics 620
0x000003C0-0x000003DF	Intel(R) HD Graphics 620

## B. Interrupt Request Lines (IRQ)

Peripheral devices use interrupt request lines to notify CPU for the service required. The following table shows the IRQ used by the devices on board.

Level	Function
IRQ 0	System timer
IRQ 1	Standard PS/2 Keyboard
IRQ 3	Communications Port (COM2)
IRQ 4	Communications Port (COM1)
IRQ 5	Communications Port (COM3)
IRQ 7	Communications Port (COM4)
IRQ 8	System CMOS/real time clock
IRQ 11	Mobile 6th/7th Generation Intel(R) Processor Family I/O SMBUS - 9D23
IRQ 11	Mobile 6th/7th Generation Intel(R) Processor Family I/O Thermal subsystem - 9D31
IRQ 12	Microsoft PS/2 Mouse
IRQ 14	Motherboard resources
IRQ 16	High Definition Audio Controller
IRQ 54 ~ IRQ 204	Microsoft ACPI-Compliant System
IRQ 256 ~ IRQ 511	Microsoft ACPI-Compliant System
IRQ 4294967285	Intel(R) Management Engine Interface
IRQ 4294967286	Intel(R) I211 Gigabit Network Connection
IRQ 4294967287	Intel(R) I211 Gigabit Network Connection
IRQ 4294967288	Intel(R) I211 Gigabit Network Connection
IRQ 4294967289	Intel(R) I211 Gigabit Network Connection
IRQ 4294967290	Intel(R) USB 3.0 eXtensible Host Controller - 1.0 (Microsoft)
IRQ 4294967291	Intel(R) HD Graphics 620
IRQ 4294967292	Intel(R) Ethernet Connection I219-V

<b>Level</b>	<b>Function</b>
IRQ 4294967293	Standard SATA AHCI Controller
IRQ 4294967294	Mobile 6th/7th Generation Intel(R) Processor Family I/O PCI Express Root Port #11 - 9D1A



## C. Watchdog Timer Configuration

The Watchdog Timer (WDT) is used to generate a variety of output signals after a user programmable count. The WDT is suitable for use in the prevention of system lock-up, such as when software becomes trapped in a deadlock. Under these sorts of circumstances, the timer will count to zero and the selected outputs will be driven.

Under normal circumstance, you will need to restart the WDT at regular intervals before the timer counts to zero.

### Sample Code:

```
//-----
//
// THIS CODE AND INFORMATION IS PROVIDED "AS IS" WITHOUT WARRANTY OF ANY
// KIND, EITHER EXPRESSED OR IMPLIED, INCLUDING BUT NOT LIMITED TO THE
// IMPLIED WARRANTIES OF MERCHANTABILITY AND/OR FITNESS FOR A PARTICULAR
// PURPOSE.
//
//-----
#include <dos.h>
#include <conio.h>
#include <stdio.h>
#include <stdlib.h>
#include "F81866.H"
//-----
int main (int argc, char *argv[]);
void EnableWDT(int);
void DisableWDT(void);
//-----
int main (int argc, char *argv[])
{
    unsigned char bBuf;
    unsigned char bTime;
    char **endptr;

    char SIO;

    printf("Fintek 81866 watch dog program\n");
    SIO = Init_F81866();
    if (SIO == 0)
    {
        printf("Can not detect Fintek 81866, program abort.\n");
        return(1);
    }
    //if (SIO == 0)

    if (argc != 2)
    {
        printf("Parameter incorrect!!\n");
        return (1);
    }
}
```

```

bTime = strtol( argv[1], endptr, 10);
printf("System will reset after %d seconds\n", bTime);

if (bTime)
{
    EnableWDT(bTime); }
else
{
    DisableWDT();      }
return 0;
}
//-----
void EnableWDT(int interval)
{
    unsigned char bBuf;

    bBuf = Get_F81866_Reg(0x2B);
    bBuf &= (~0x20);
    Set_F81866_Reg(0x2B, bBuf);          //Enable WDTO

    Set_F81866_LD(0x07);                //switch to logic device 7
    Set_F81866_Reg(0x30, 0x01);        //enable timer

    bBuf = Get_F81866_Reg(0xF5);
    bBuf &= (~0x0F);
    bBuf |= 0x52;
    Set_F81866_Reg(0xF5, bBuf);        //count mode is second

    Set_F81866_Reg(0xF6, interval);    //set timer

    bBuf = Get_F81866_Reg(0xFA);
    bBuf |= 0x01;
    Set_F81866_Reg(0xFA, bBuf);        //enable WDTO output

    bBuf = Get_F81866_Reg(0xF5);
    bBuf |= 0x20;
    Set_F81866_Reg(0xF5, bBuf);        //start counting
}
//-----
void DisableWDT(void)
{
    unsigned char bBuf;

    Set_F81866_LD(0x07);                //switch to logic device 7

    bBuf = Get_F81866_Reg(0xFA);
    bBuf &= ~0x01;
    Set_F81866_Reg(0xFA, bBuf);        //disable WDTO output

    bBuf = Get_F81866_Reg(0xF5);
    bBuf &= ~0x20;
    bBuf |= 0x40;
    Set_F81866_Reg(0xF5, bBuf);        //disable WDT
}
//-----

//-----

```

```

//
// THIS CODE AND INFORMATION IS PROVIDED "AS IS" WITHOUT WARRANTY OF ANY
// KIND, EITHER EXPRESSED OR IMPLIED, INCLUDING BUT NOT LIMITED TO THE
// IMPLIED WARRANTIES OF MERCHANTABILITY AND/OR FITNESS FOR A PARTICULAR
// PURPOSE.
//
//-----
#include "F81866.H"
#include <dos.h>
//-----
unsigned int F81866_BASE;
void Unlock_F81866 (void);
void Lock_F81866 (void);
//-----
unsigned int Init_F81866(void)
{
    unsigned int result;
    unsigned char ucDid;

    F81866_BASE = 0x4E;
    result = F81866_BASE;

    ucDid = Get_F81866_Reg(0x20);
    if (ucDid == 0x07) //Fintek 81866
    {
        goto Init_Finish;
    }

    F81866_BASE = 0x2E;
    result = F81866_BASE;

    ucDid = Get_F81866_Reg(0x20);
    if (ucDid == 0x07) //Fintek 81866
    {
        goto Init_Finish;
    }

    F81866_BASE = 0x00;
    result = F81866_BASE;

Init_Finish:
    return (result);
}
//-----
void Unlock_F81866 (void)
{
    outputb(F81866_INDEX_PORT, F81866_UNLOCK);
    outputb(F81866_INDEX_PORT, F81866_UNLOCK);
}
//-----
void Lock_F81866 (void)
{
    outputb(F81866_INDEX_PORT, F81866_LOCK);
}
//-----
void Set_F81866_LD( unsigned char LD)
{
    Unlock_F81866();
    outputb(F81866_INDEX_PORT, F81866_REG_LD);
    outputb(F81866_DATA_PORT, LD);
    Lock_F81866();
}

```

```

}
//-----
void Set_F81866_Reg( unsigned char REG, unsigned char DATA)
{
    Unlock_F81866();
    outputb(F81866_INDEX_PORT, REG);
    outputb(F81866_DATA_PORT, DATA);
    Lock_F81866();
}
//-----
unsigned char Get_F81866_Reg(unsigned char REG)
{
    unsigned char Result;
    Unlock_F81866();
    outputb(F81866_INDEX_PORT, REG);
    Result = inputb(F81866_DATA_PORT);
    Lock_F81866();
    return Result;
}
//-----

//-----
//
// THIS CODE AND INFORMATION IS PROVIDED "AS IS" WITHOUT WARRANTY OF ANY
// KIND, EITHER EXPRESSED OR IMPLIED, INCLUDING BUT NOT LIMITED TO THE
// IMPLIED WARRANTIES OF MERCHANTABILITY AND/OR FITNESS FOR A PARTICULAR
// PURPOSE.
//
//-----
#ifndef F81866_H
#define F81866_H                1
//-----
#define F81866_INDEX_PORT      (F81866_BASE)
#define F81866_DATA_PORT      (F81866_BASE+1)
//-----
#define F81866_REG_LD          0x07
//-----
#define F81866_UNLOCK          0x87
#define F81866_LOCK            0xAA
//-----
unsigned int Init_F81866(void);
void Set_F81866_LD( unsigned char);
void Set_F81866_Reg( unsigned char,
unsigned char); unsigned char
Get_F81866_Reg( unsigned char);
//-----
#endif // F81866_H

```

## D. Onboard Connector Reference Types

Function	Connector Name	Onboard Type	Compatible Mating Type
Audio Connector	J1	Hao Guo Xing Ye DF11-12S-PA66H	Hirose DF11-12DS-2C
SATA HDD Power Connector	J5	E-call 0110-071-040	JST XHP-4
Front Panel Setting Connector	J6	Dupon 2.54 mm-pitch pin header (Male)	Dupon 2.54 mm-pitch (Female)
USB 2.0 Connector	J7	Hao Guo Xing Ye DF11-8S-PA66H	Hirose DF11-8DS-2C
Battery Connector	J10	Molex 53047-0210	Molex 51021-0200
COM 2, COM3, COM4 RS-232 Ports	J15, J12, J11	Hao Guo Xing Ye DF11-10S-PA66H	Hirose DF11-10DS-2C
DC Power Input Connector	J13	Hao Guo Xing Ye WAFER396-2S-WV	JST VHR-2N
Digital I/O Connector	J16	Dupon 2.00 mm-pitch pin header (Male)	Dupon 2.00 mm-pitch (Female)
LCD Backlight Connector	J19	E-CALL 0110-161-040	JST PHR-4.
LVDS Connectors	J17 (1st channel), J18 (2nd channel)	Hirose DF20G-20DP-1V	Hirose DF20A-20DS-1C

Our company network supports you worldwide with offices in Germany, Austria, Switzerland, the UK and the USA. For more information please contact:

## Headquarters

### Germany



#### FORTEC Elektronik AG

Augsburger Str. 2b  
82110 Germering

Phone: +49 89 894450-0  
E-Mail: [info@fortecag.de](mailto:info@fortecag.de)  
Internet: [www.fortecag.de](http://www.fortecag.de)

## Fortec Group Members

### Austria



#### Distec GmbH Office Vienna

Nuschinggasse 12  
1230 Wien

Phone: +43 1 8673492-0  
E-Mail: [info@distec.de](mailto:info@distec.de)  
Internet: [www.distec.de](http://www.distec.de)

### Germany



#### Distec GmbH

Augsburger Str. 2b  
82110 Germering

Phone: +49 89 894363-0  
E-Mail: [info@distec.de](mailto:info@distec.de)  
Internet: [www.distec.de](http://www.distec.de)

### Switzerland



#### ALTRAC AG

Bahnhofstraße 3  
5436 Würenlos

Phone: +41 44 7446111  
E-Mail: [info@altrac.ch](mailto:info@altrac.ch)  
Internet: [www.altrac.ch](http://www.altrac.ch)

### United Kingdom



#### Display Technology Ltd.

Osprey House, 1 Osprey Court  
Hichingbrooke Business Park  
Huntingdon, Cambridgeshire, PE29 6FN

Phone: +44 1480 411600  
E-Mail: [info@displaytechnology.co.uk](mailto:info@displaytechnology.co.uk)  
Internet: [www.displaytechnology.co.uk](http://www.displaytechnology.co.uk)

### USA



#### Apollo Display Technologies, Corp.

87 Raynor Avenue,  
Unit 1 Ronkonkoma,  
NY 11779

Phone: +1 631 5804360  
E-Mail: [info@apolloDisplays.com](mailto:info@apolloDisplays.com)  
Internet: [www.apolloDisplays.com](http://www.apolloDisplays.com)