



OUR GLOBAL
COMPETENCE
CENTRES

 APOLLO DISPLAY
TECHNOLOGIES



 DISTEC



 DISPLAY
TECHNOLOGY



Datasheet

DLC

8 @ 7 % \$ \$ 6 6 D' - < : ! 7 ! &

ZÖHRE

DLC Display Co., Limited

德爾西顯示器有限公司



MODEL No: DLC1010BBP39HF-C-2



Record of Revision

Date	Revision No.	Summary
2022-12-08	1.0	Rev 1.0 was issued

1. Scope

This data sheet is to introduce the specification of DLC1010BBP39HF-C-2, active matrix TFT module. It is composed of a color TFT-LCD panel, driver IC, FPC, CTP, PCB board and a backlight unit. The 10.1" display area contains 1280(RGB) x 800 pixels.

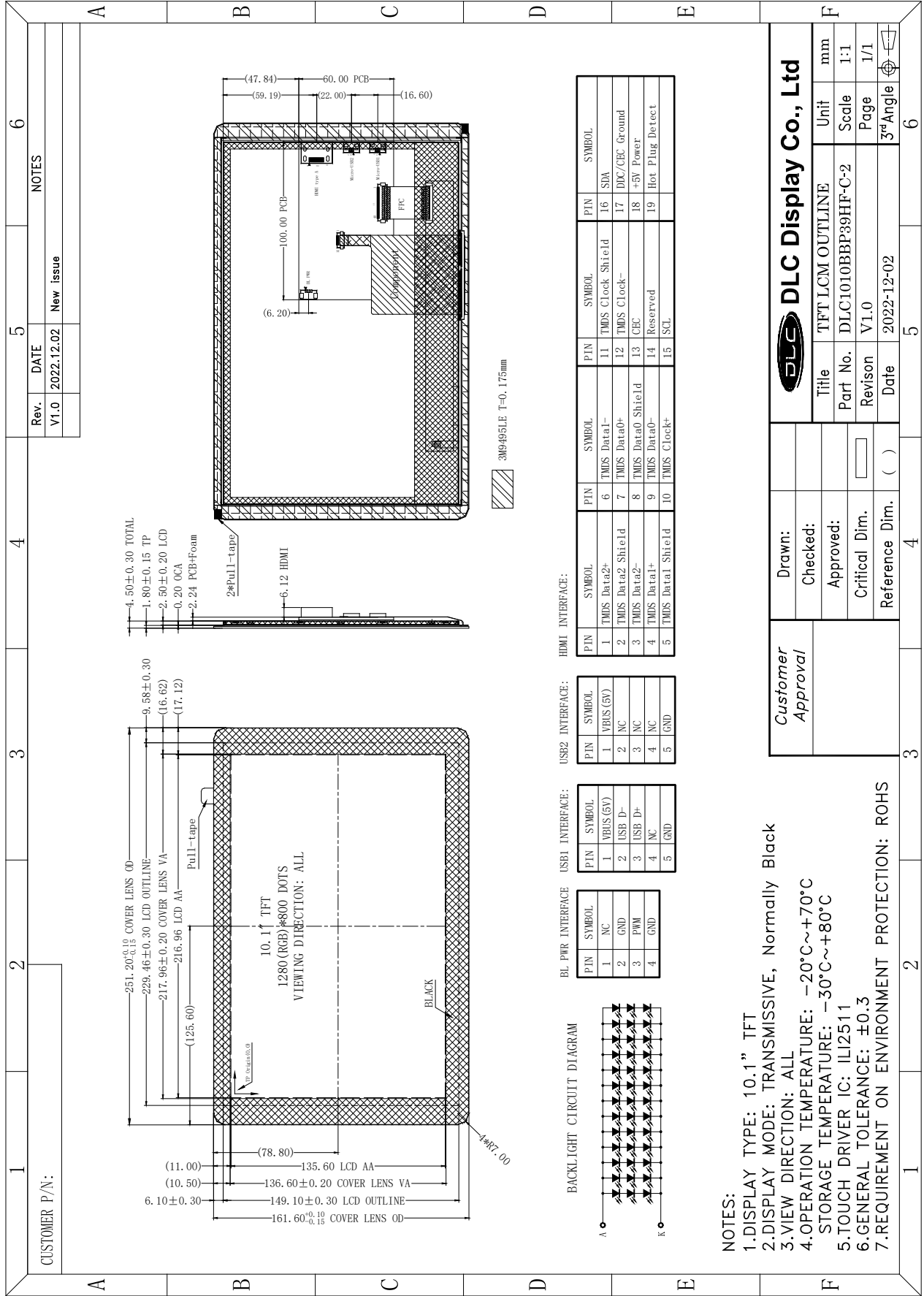
2. Application

Digital equipments which need color display, mobile navigator/video systems.

3. General Information

Item	Contents	Unit
Size	10.1	inch
Resolution	1280(RGB) x 800	/
Interface	HDMI	/
Technology type	IPS	/
Pixel pitch	0.1695 x 0.1695	mm
Pixel Configuration	R.G.B. Stripe	
Outline Dimension (W x H x D)	251.20 x 161.60 x 4.50	mm
Active Area	216.96 x 135.60	mm
Display Mode	Transmissive, Normally Black	/
Viewing Direction	ALL	/
Touch Driver IC	ILI2511	/
Backlight Type	LED	/

4. Outline Drawing



- NOTES:**
- 1.DISPLAY TYPE: 10.1" TFT
 - 2.DISPLAY MODE: TRANSMISSIVE, Normally Black
 - 3.VIEW DIRECTION: ALL
 - 4.OPERATION TEMPERATURE: -20°C~+70°C
 - 5.TOUCH DRIVER IC: ILI2511
 - 6.GENERAL TOLERANCE: ±0.3
 - 7.REQUIREMENT ON ENVIRONMENT PROTECTION: ROHS



DLC Display Co., Ltd		TFT LCM OUTLINE	
Title	Unit	Scale	Page
DLC1010BBP39HF-C-2	mm	1:1	1/1
Revision	V1.0	Date	2022-12-02

Rev.	DATE	NOTES
V1.0	2022.12.02	New issue

5. Interface signals

5.1 HDMI Interface Description

No	Symbol	Description	Remark
1	TMDS Data2+	Positive side of channel 2 TMDS low-voltage signal differential input pair	
2	TMDS Data2 Shield	Ground	
3	TMDS Data2-	Negative side of channel 2 TMDS low-voltage signal differential input pair	
4	TMDS Data1+	Positive side of channel 1 TMDS low-voltage signal differential input pair	
5	TMDS Data1 Shield	Ground	
6	TMDS Data1-	Negative side of channel 1 TMDS low-voltage signal differential input pair	
7	TMDS Data0+	Positive side of channel 0 TMDS low-voltage signal differential input pair	
8	TMDS Data0 Shield	Ground	
9	TMDS Data0-	Negative side of channel 0 TMDS low-voltage signal differential input pair	
10	TMDS Clock+	Positive side of reference clock. TMDS low-voltage signal differential input pair	
11	TMDS Clock Shield	Ground	
12	TMDS Clock-	Negative side of reference clock. TMDS low-voltage signal differential input pair	
13	CEC	No connection	
14	Reserved	No connection	
15	SCL	DDC SCL	
16	SDA	DDC SDA	
17	DDC/CEC Ground	Ground	
18	+5V Power	Power supply	
19	Hot Plug Detect	Hot Plug Detect	

5.2 USB1 Interface Description:

1	VBUS(5V)	USB Power supply	
2	USB D-	USB data-	
3	USB D+	USB data+	
4	NC	No connection	
5	GND	Power ground	

5.3 USB2 Interface Description:

1	VBUS(5V)	USB Power supply	
2	NC	No connection	
3	NC	No connection	
4	NC	No connection	
5	GND	Power ground	

5.4 BL PWER Interface Description

1	NC	No connection	
2	GND	Power ground	
3	PWM	Backlight On/Off control input	
4	GND	Power ground	

6. Absolute maximum Ratings

6.1. Electrical Absolute max. ratings

Parameter	Symbol	MIN	MAX	Unit	Remark
Power supply voltage	VDD	-0.3	3.9	V	
	VBUS	-0.3	6.0	V	

6.2. Environment Conditions

Item	Symbol	MIN	MAX	Unit	Remark
Operating Temperature	TOPR	-20	70	°C	
Storage Temperature	TSTG	-30	80	°C	

7. Electrical Specifications

7.1 Electrical characteristics

GND=0V, Ta=25°C

Item	Symbol	MIN	TYP	MAX	Unit
PCB Operating Voltage	VBUS	4.8	5.0	5.5	V
PCB Current (Single USB power supply)	IBUS	--	1.1	--	A
PCB Current (Dual USB power supply)	IBUS	--	0.55	--	A
LCD I/O Operating Voltage	VDD	2.3	2.5	2.7	V
Input Voltage "H" level	VIH	0.8*VDD	-	VDD	V
Input Voltage "L" level	VIL	VSS	-	0.2*VDD	V
Output Voltage "H" level	VOH	VDD-0.4	-	VDD	V
Output Voltage "L" level	VOL	VSS	-	VSS+0.4	V

7.2 CTP Characteristics

Item of CTP characteristics	Specification	Unit	Remark
Panel Type	Glass Cover + Glass Sensor		
Resolution	1280 x 800	Pixel	
Surface Hardness	≥ 6H		
Transparency	≥ 86%		
Driver IC	ILI2511		
Interface Type	USB/IIC		
Support Points	5		
Sampling Rate	20~100	Hz	
Supply Voltage	5V/3.3V	V	

8. Command/AC Timing

8.1 LCD Timing

Parameter	Symbol	Spec			Unit
		Min.	Typ.	Max.	
Clock frequency	1/tc	68.9	71.1	73.4	MHz
Horizontal display area	thd	1280			tc
HSD period time	th	1410	1440	1470	tc
HS width + Back porch + Front porch	thw+thbp+thfp	60	160	190	tc
Vertical display area	tvd	800			th
VSD period time	tv	815	823	833	th
VS width + Back porch + Front porch	tvw+tvbp+tvfp	15	23	33	th

9. Optical Specification

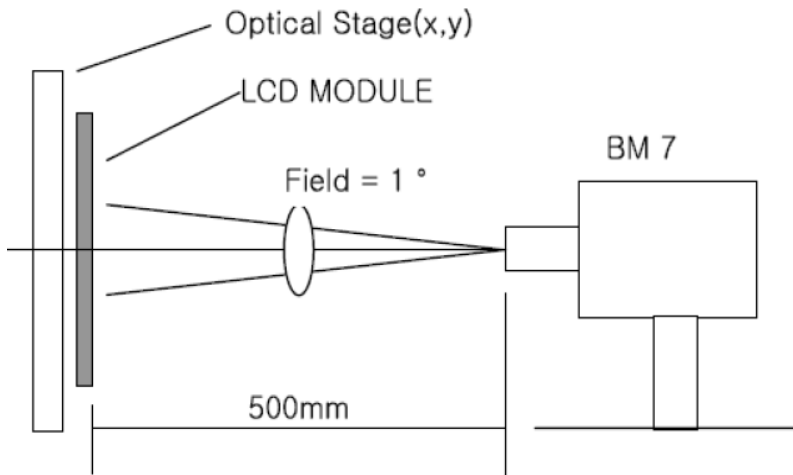
Ta=25°C

Item	Symbol	Condition	Min	Typ.	Max.	Unit	Remark	
Contrast Ratio	CR	$\theta=0^\circ$	600	800	--		Note1 Note2	
Response Time	Tr + Tf	25°C	--	25	50	ms	Note1 Note3	
View Angles	ΘT	CR \geq 10	75	85	--	Degree	Note 4	
	ΘB		75	85	--			
	ΘL		75	85	--			
	ΘR		75	85	--			
Chromaticity	White	Brightness is on	Typ-0.05	0.3252	Typ+0.05		Note5, Note1	
				y				0.2883
	Red			x				0.6349
				y				0.2643
	Green			x				0.4143
				y				0.4674
	Blue			x				0.2162
				y				0.0754
Luminance	L		--	300	--	cd/m ²	Note1 Note6	
Uniformity	U		75	80	--	%	Note1 Note7	

Note 1: Definition of optical measurement system.

Temperature = 25°C(±3°C) ,

LED back-light: ON, Environment brightness < 150 lx

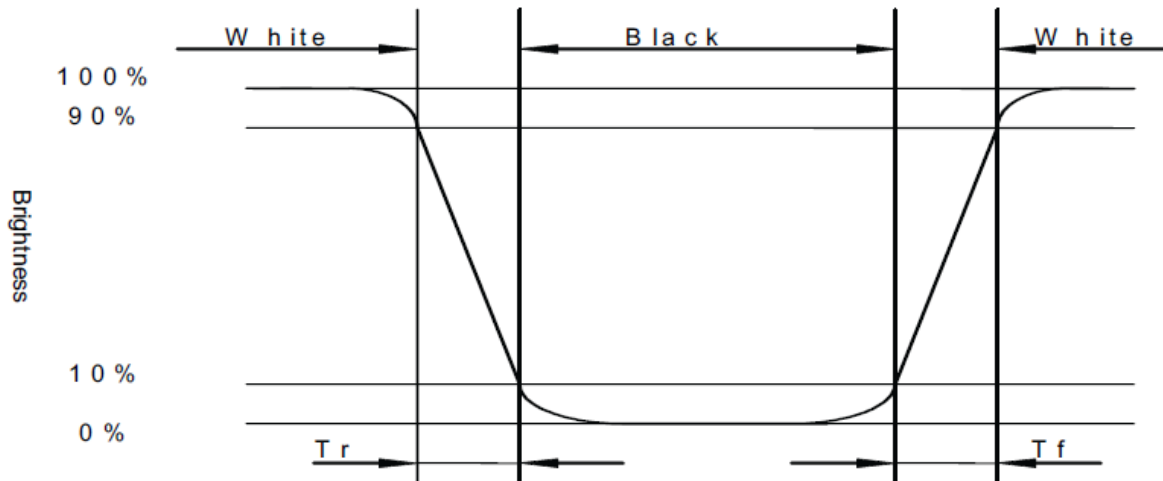


Note 2: Contrast ratio is defined as follow:

$$\text{Contrast Ratio} = \frac{\text{Surface Luminance with all white pixels}}{\text{Surface Luminance with all black pixels}}$$

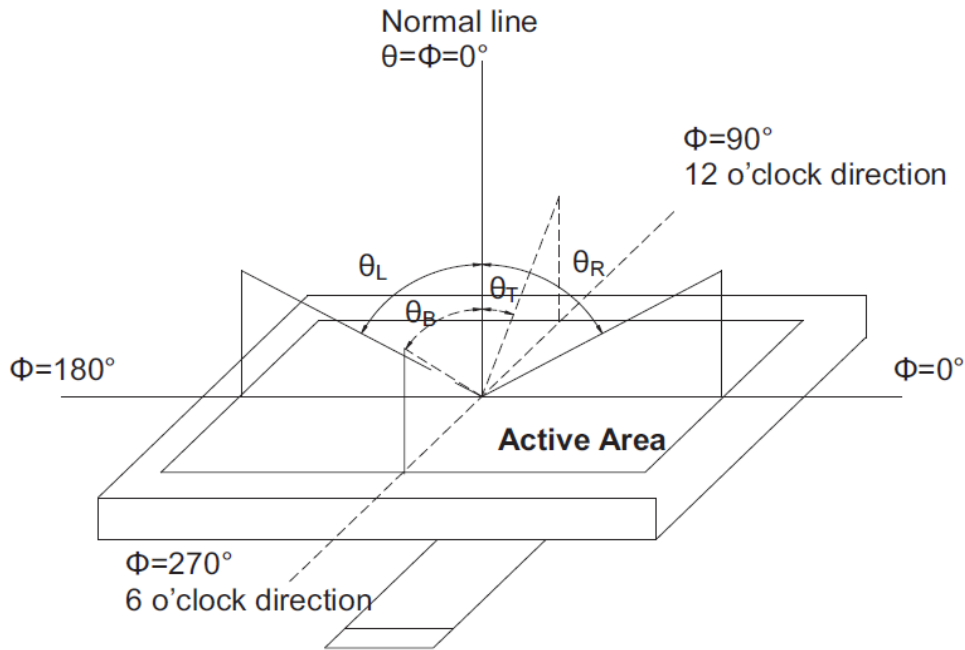
Note 3: Response time is defined as follow:

Response time is the time required for the display to transition from black to white (Rise Time, Tr) and from white to black(Decay Time, Tf).

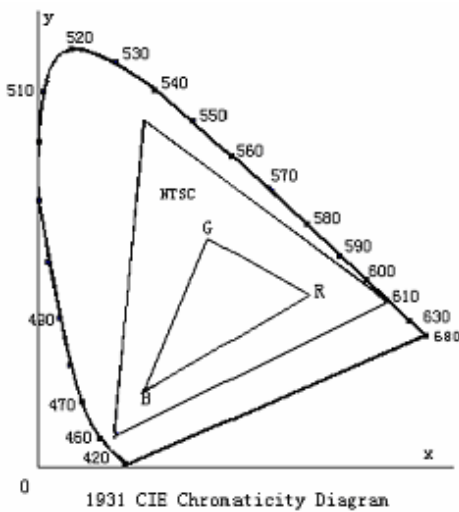


Note 4: Viewing angle range is defined as follow:

Viewing angle is measured at the center point of the LCD.



Note 5: Color chromaticity is defined as follow: (CIE1931)
 Color coordinates measured at center point of LCD.



$$S = \frac{\text{area of RGB triangle}}{\text{area of NTSC triangle}} \times 100\%$$

Note 6: Luminance is defined as follow:

Luminance is defined as the brightness of all pixels “White” at the center of display area on optimum contrast.

Note 7: Luminance Uniformity is defined as follow:

Active area is divided into 9 measuring areas (Refer Fig. 2). Every measuring point is placed at the center of each measuring area.

$$\text{Uniformity}(U) = \frac{\text{Minimum Luminance(brightness) in 9 points}}{\text{Maximum Luminance(brightness) in 9 points}}$$

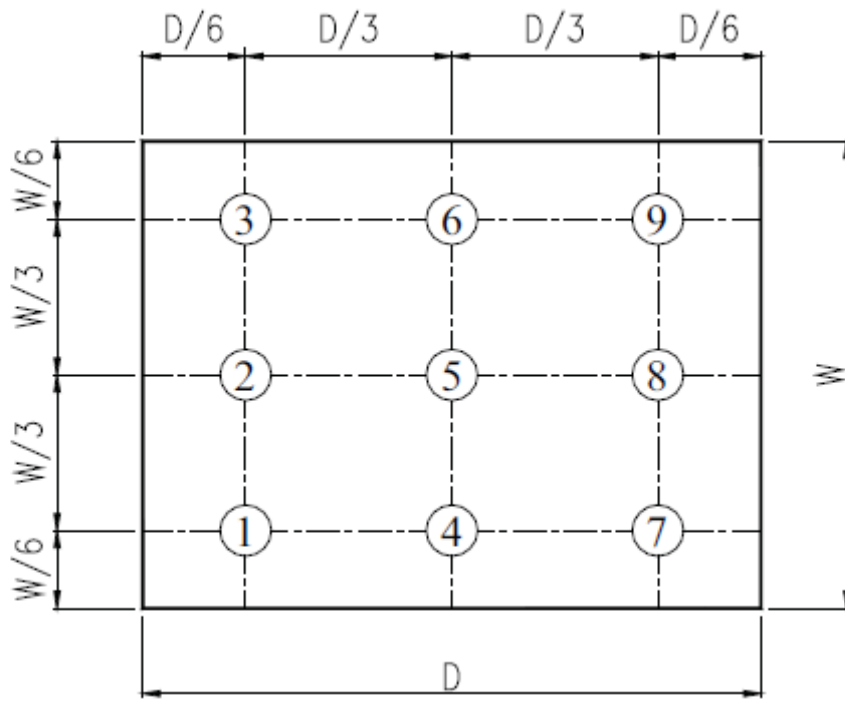


Fig. 2 Definition of uniformity

10. Environmental / Reliability Tests

No	Test Item	Condition	Judgment criteria
1	High Temp Operation	Ta= +70°C, 120hrs	Per table in below
2	Low Temp Operation	Ta= -20°C, 120hrs	Per table in below
3	High Temp Storage	Ts= +80°C, 120hrs	Per table in below
4	Low Temp Storage	Ts= -30°C, 120hrs	Per table in below
5	High Temp & High Humidity Storage	Ts= +40°C, 90% RH, 120 hours	Per table in below (polarizer discoloration is excluded)
6	Thermal Shock (Non-operation)	-20°C/30 min ~ +60°C/30 min for a total 100 cycles, Start with cold temperature and end with high temperature.	Per table in below
7	ESD (Operation)	± 2KV, Human Body Mode, 100pF/1500Ω	Per table in below
8	Vibration(Non-operation)	Frequency range:10~55Hz, Stroke:1.5mm Sweep:10Hz~55Hz~10Hz 2 hours for each direction of X.Y.Z.	Per table in below
9	Shock (Non-operation)	100G 6ms, ±X,±Y,±Z 3times, for each direction	Per table in below
10	Package Drop Test	Height:60 cm, 1 corner, 3 edges, 6 surfaces	Per table in below
11	Package Vibration Test	Random Vibration : ISTA-3A 1Hz~200Hz,Grms=0.53 Half hours for direction of Z.	Per table in below

INSPECTION	CRITERION(after test)
Appearance	No Crack on the FPC, on the LCD Panel
Alignment of LCD Panel	No Bubbles in the LCD Panel No other Defects of Alignment in Active area
Electrical current	Within device specifications
Function / Display	No Broken Circuit, No Short Circuit or No Black line No Other Defects of Display

11. Precautions for Use of LCD Modules

11.1 Safety

The liquid crystal in the LCD is poisonous. Do not put it in your mouth. If the liquid crystal touches your skin or clothes, wash it off immediately using soap and water.

11.2 Handling

- A. The LCD and touch panel is made of plate glass. Do not subject the panel to mechanical shock or to excessive force on its surface.
- B. Do not handle the product by holding the flexible pattern portion in order to assure the reliability
- C. Transparency is an important factor for the touch panel. Please wear clear finger sacks, gloves and mask to protect the touch panel from finger print or stain and also hold the portion outside the view area when handling the touch panel.
- D. Provide a space so that the panel does not come into contact with other components.
- E. To protect the product from external force, put a covering lens (acrylic board or similar board) and keep an appropriate gap between them.
- F. Transparent electrodes may be disconnected if the panel is used under environmental conditions where dew condensation occurs.
- G. Property of semiconductor devices may be affected when they are exposed to light, possibly resulting in IC malfunctions.
- H. To prevent such IC malfunctions, your design and mounting layout shall be done in the way that the IC is not exposed to light in actual use.

11.3 Static Electricity

- A. Ground soldering iron tips, tools and testers when they are in operation.
- B. Ground your body when handling the products.
- C. Power on the LCD module before applying the voltage to the input terminals.
- D. Do not apply voltage which exceeds the absolute maximum rating.
- E. Store the products in an anti-electrostatic bag or container.

11.4 Storage

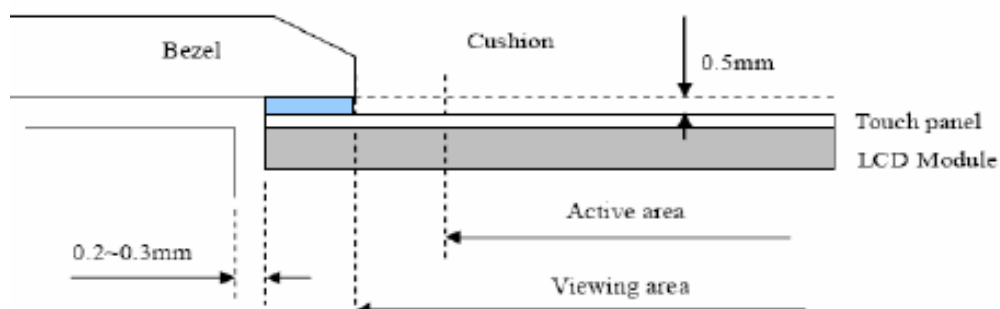
- A. Store the products in a dark place at $+25^{\circ}\text{C} \pm 10^{\circ}\text{C}$ with low humidity (40% RH to 60% RH). Don't expose to sunlight or fluorescent light.
- B. Storage in a clean environment, free from dust, active gas, and solvent.

11.5 Cleaning

- A. Do not wipe the touch panel with dry cloth, as it may cause scratch.
- B. Wipe off the stain on the product by using soft cloth moistened with ethanol. Do not allow ethanol to get in between the upper film and the bottom glass. It may cause peeling issue or defective operation. Do not use any organic solvent or detergent other than ethanol.

11.6 Cautions for installing and assembling

- A. Bezel edge must be positioned in the area between the Active area and View area. The bezel may press the touch screen and cause activation if the edge touches the active area. A gap of approximately 0.5mm is needed between the bezel and the top electrode. It may cause unexpected activation if the gap is too narrow. There is a tolerance of 0.2 to 0.3mm for the outside dimensions of the touch panel and tail. A gap must be made to absorb the tolerance in the case and connector.
- B. In order to make the display assembly stable and firm, DLC recommends to design some supporting at the display backside, especially for the display with tape-attached touch panel, such supporting is important and essential, or else, the display may drop-off from front after some period of time.
- C. Do not display the fixed pattern for a long time because it may develop image sticking due to the LCD structure. If the screen is displayed with fixed pattern, use a screen saver.



Our company network supports you worldwide with offices in Germany, Austria, Switzerland, the UK and the USA. For more information please contact:

Headquarters

Germany



FORTEC Elektronik AG

Augsburger Str. 2b
82110 Germering

Phone: +49 89 894450-0
E-Mail: info@forteca.de
Internet: www.forteca.de

Fortec Group Members

Austria



Distec GmbH Office Vienna

Nuschinggasse 12
1230 Wien

Phone: +43 1 8673492-0
E-Mail: info@distec.de
Internet: www.distec.de

Germany



Distec GmbH

Augsburger Str. 2b
82110 Germering

Phone: +49 89 894363-0
E-Mail: info@distec.de
Internet: www.distec.de

Switzerland



ALTRAC AG

Bahnhofstraße 3
5436 Würenlos

Phone: +41 44 7446111
E-Mail: info@altrac.ch
Internet: www.altrac.ch

United Kingdom



Display Technology Ltd.

Osprey House, 1 Osprey Court
Hichingbrooke Business Park
Huntingdon, Cambridgeshire, PE29 6FN

Phone: +44 1480 411600
E-Mail: info@displaytechnology.co.uk
Internet: www.displaytechnology.co.uk

USA



Apollo Display Technologies, Corp.

87 Raynor Avenue,
Unit 1 Ronkonkoma,
NY 11779

Phone: +1 631 5804360
E-Mail: info@apolloDisplays.com
Internet: www.apolloDisplays.com